

A woman with dark curly hair, wearing a light blue and white striped shirt, is lifting a young child into the air. The child is wearing a bright yellow shirt and light blue pants. They are both smiling and looking at each other. The background is a solid teal color.

Molina Healthcare of Nevada

We think of you as Family



Presenter:

Dr. Tracey Green, chief medical officer

Kim Gahagan, associate vice president, growth & community engagement

Impact to Nevada

- Building resilient communities by partnering with **hundreds of community-based organizations** to address the increased need for essential food and supplies, rental and utility assistance, employment support and other needs.



Commitment to Data Exchange

- Collaborate with HealthIE Nevada.
 - Expand the Obstetrics (OB) collaborative.
 - Support the Bonus Program



- Support electronic exchange of clinical information in efforts to improve health care quality, access and member outcomes.
 - Integrate data to create a single source platform for all providers.
 - Enhance provider care coordination to improve HEDIS and health outcomes of the population.
 - Support improved OB/maternal and prenatal outcomes with support to the Nevada Perinatal Quality Collaborative.

Project ECHO Nevada

- Expand network of providers to serve individuals with substance use disorder (SUD) & severe mental illness (SMI).
- Invest in programs that assist providers with wellness and balancing health as well as work life.



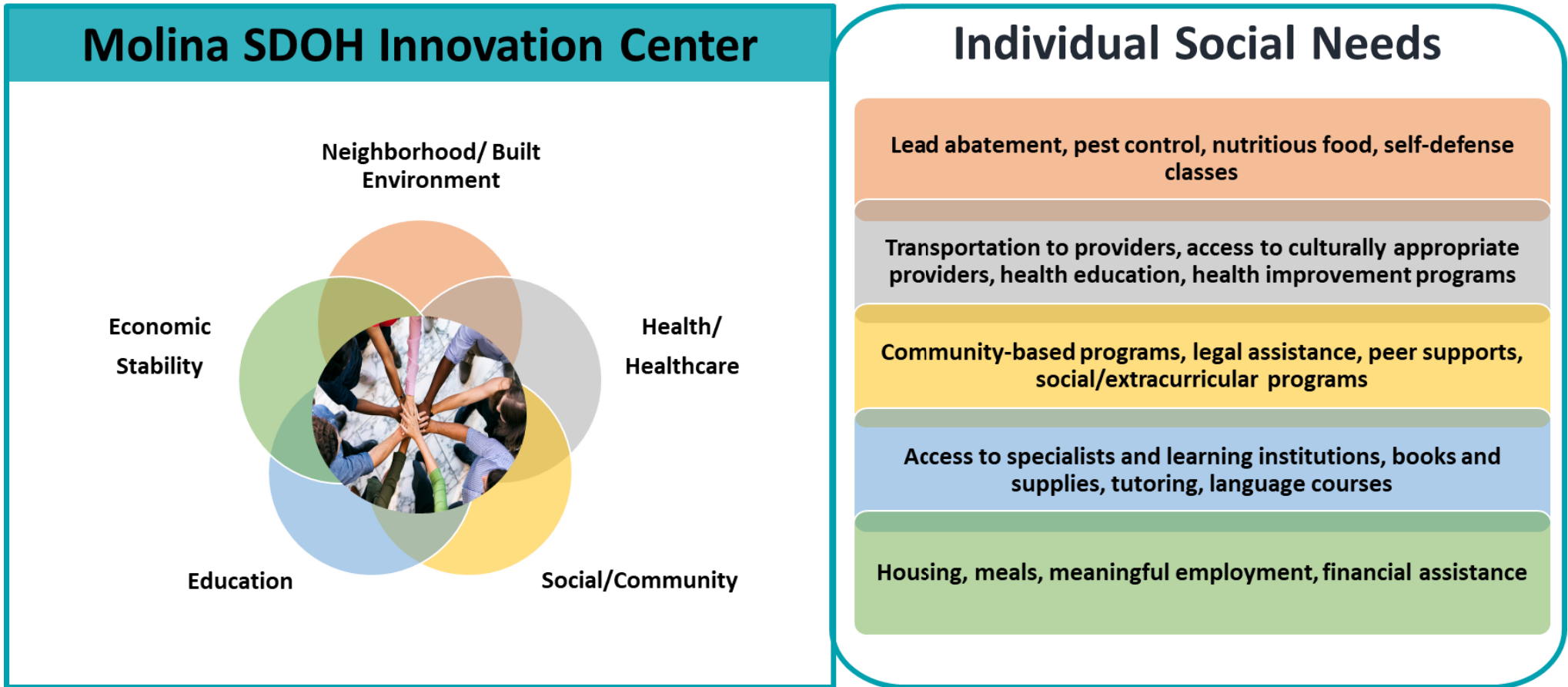
Molina Mobile Unit

The Molina Care Connections mobile unit will expand access to care in Clark and Washoe counties.



Molina Social Determinants of Health (SDOH)

We collaborate across SDOH domains to implement innovative solutions that promote health equity, eliminate social risk factors, and meet individual social needs of Molina members to improve health and wellness.



Thank you.
We welcome any questions or comments.

