



## Medicaid Reinvestment Advisory Committee

Presented by:

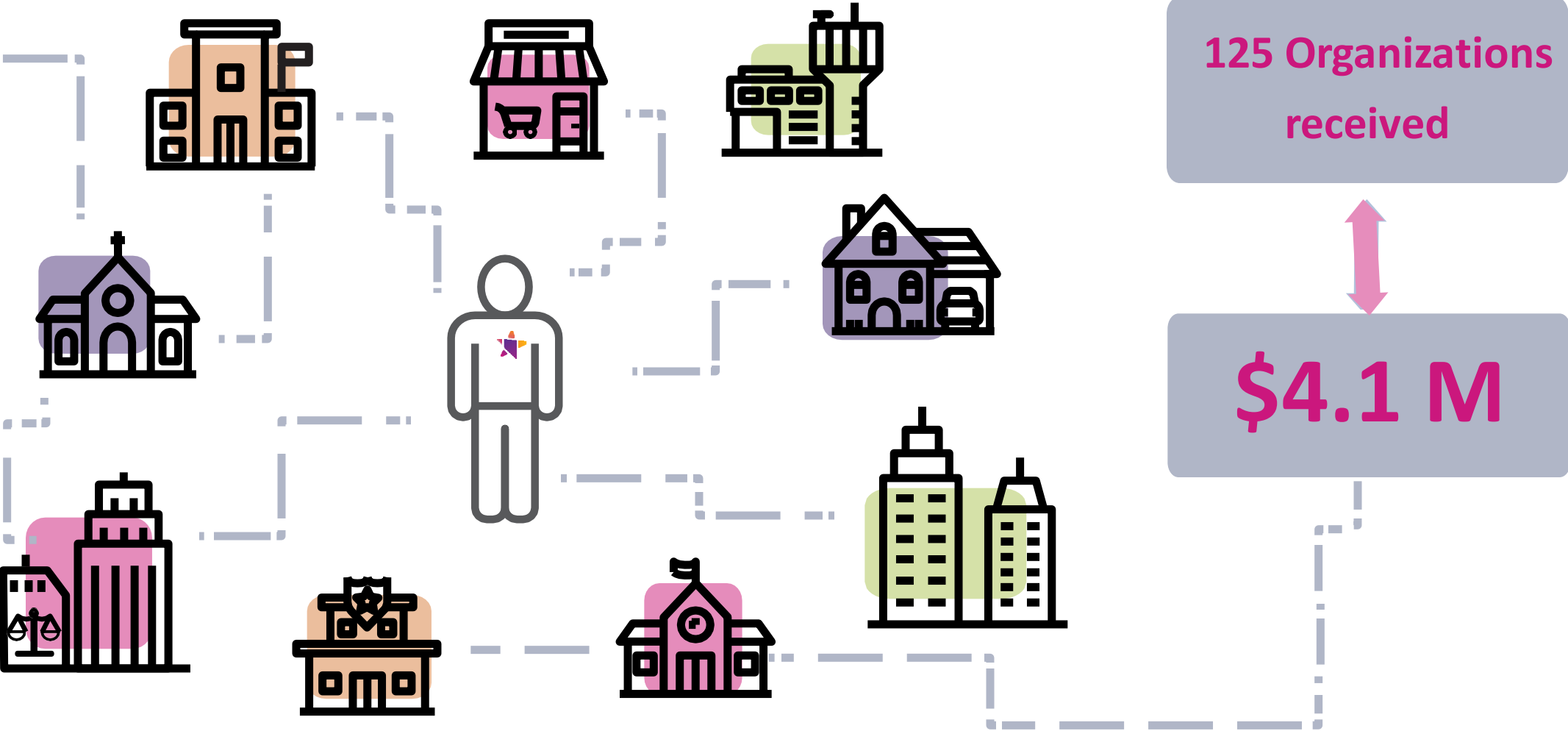
Nicole King

Vice President, Community Solutions

April 9, 2024

# SilverSummit – 2023 Total Giving

Going Above and Beyond to Transform the Health of the Community, One Person at a Time





# Clark County Investments



Funding Given in 2023 for Programs to Operate in 2024

Note: See Appendix for Full Program Descriptions

# Funding Priority Areas

\$2,184,005 Total Investments

## Housing Services - \$1,062,978

- Clark County Social Services
- Corporation for Supportive Housing
- HELP of Southern Nevada
- Las Vegas Rescue Mission
- Puentes
- REACH
- The Salvation Army
- The Just One Project

## Increase Access to Healthcare Services - \$199,027

- Cure 4 The Kids
- NAMI of Southern Nevada
- Nevada Primary Care Association
- Mobility X

## Maternal Child Health Services- \$150,000

- Baby's Bounty
- High Risk Pregnancy Center

## Access and Utilization of Preventative Care Services - \$175,000

- Hope Christian Center
- Novum Health

## Youth Services – \$75,000

- Phase 1 Foundation

## Workforce Development Services - \$147,000

- Boys & Girls Club of Southern Nevada
- Jobs 4 Nevada's Graduates
- The Just One Project

## Justice Involved Community Reentry - \$375,000

- Freedom House Sober Living
- WestCare



# 2023 Member Outcomes



December 2022 - Funding Awarded

2023 Program Operations

January 2024 – Program Evaluation Report Submitted

# Member Outcomes

## Housing Services

171  
Members  
Served

### Puentes

Housing assistance and case management

- 59% of Members gained employment
- 75% of Members retained stable housing
- 63% used healthcare benefits

37  
Members  
Served

### The Salvation Army

Housing assistance and case management

- 76% obtained employment
- 54% received job assistance
- 30% took over rental payments
- 49% received mental health services

95%  
Youth  
Maintained  
Employed

### RISE Home

Transitional housing and wraparound services to aged-out foster youth

- provided housing for 41 youths and ensured food accessibility through SNAP & "The Just One Project"
- achieving a 56% permanent housing transition rate.

*\* Not all SSHP Members*

# Member Outcomes

## Justice Involved Community Reentry Services

**81**  
Members  
Completed  
Program

### Freedom House

Reducing recidivism among our justice-involved Members

- 38% of SilverSummit Members successfully completed the program
- 413 clients admitted to Freedom House with a 61% average success rate
- transitioned 252 clients to stable housing

**18**  
Members  
Assisted

### WestCare

Residential Treatment and Transitional Services

- achieving a 78% success rate for being substance-free for 30 days with a 100% recidivism reduction rate
- 78% transitioned to stable housing
- 78% connected to a PCP

## Increase Access to Healthcare Services



### Successful Recruitment

#### Cure 4 The Kids

##### Pediatric Rheumatologist Recruitment

- Successfully assisted with recruitment of **Dr. Saumya Joshi**,  
**Pediatric Rheumatology**



### 1,153 New Patients

#### REACH Community Health Center

Established a community health center to increase access to care

- served a total of **46,606** community members
- **3,500 SilverSummit Members** served through the REACH Community Health Center, Mobile Clinic and Outreach locations



# Client Outcomes

## Youth Services

563  
Teens  
Served  
aged 13 -18

### Boys and Girls Club of So NV

Improve Academic success and opportunity for employability

- Established a dedicated **Career Developer position** within Clubhouse Operations Team
- **75%** of 12 grade members applied for post-secondary education
- **75%** of 11<sup>th</sup> to 12<sup>th</sup> grade members participated in money management program

Up to  
300  
Youth  
Served

### Donna Street

Prevent youth from entering or having further involvement in the justice system

- **improvement** in Member engagement
- **Increase** in wellness program participation

1,153  
Students  
Served

### Communities in Schools

Support *Integrated Student Support* program to raise graduation rates and employable workforce

- **95%** of Students Graduated
- **99%** of Students advanced to next grade
- **98%** of Students met career readiness goal
- **98%** of Students met college readiness goal

# Member Health Outcomes (Statewide, 2023)

---

- Members who engaged in our Housing Program **were more likely** to have seen their primary care provider.\*
- Members who engaged in our Workforce Development Program **were less likely** to go to the ER for non-emergent issues.\*

## Area of Opportunity

- Members who engaged in our Justice-Involved Program tend to go to the ER more often while less frequently visiting their Primary Care Provider.\*
- This population has a **14.4% higher incidence of substance use disorder** than our Workforce Development Population & **2.67% higher** than our Housing Program Population.

\*Compared against demographically similar SilverSummit Members who DID NOT engage in services.

# 2023 Members and Partners

## Testimonial Statements

### **The Salvation Army: A Member Story**

A resilient individual, who once grappled with the challenges of schizophrenia, joined our program, and dedicated himself to medication compliance and found stability. Today, he thrives in auto sales, showcasing his newfound confidence. The 3 months of paid program fees SilverSummit provided, has allowed him to get back on his feet, and work towards self sufficiency, and he is filled with renewed hope.

### R.I.S.E Homes

*“The partnership and the overall impact on our organization has been profound.”*

*“I will forever be grateful . I did not know that insurance companies helped the community in this way. Because of you, my daughters were able to stay in their home while I figured things out.”*

- Gail O.



# Community Investment Program Survey Results



It's not only about how much we give, but HOW we give that matters

# Community Investment Program Survey Results

## Key Insights from Participant Responses

### Positive Feedback:

- The application process is easy to follow, with one describing it as "perfect and easy"
- The application technical requirements are clear and straightforward, allowing them to complete the process without challenges
- The current priority areas are relevant and comprehensive
- They value the transparency and inclusivity of the program


### Suggestions for Improvement:

- More transparency regarding scoring criteria, i.e. we could provide the number of points each section is allocated
- Provide training sessions prior to the deadline
- Ensure the process for receiving technical assistance is clearly visible on website



# Community Investment Survey Results

## Key Feedback from Survey Participants



*“We are just glad that the program exists!”*

*“This program has been instrumental in advancing health equity in underserved communities.”*

*“It is a win to see the involvement of SilverSummit in the community, I have not seen such investment and advocacy for members until now. Thank you.”*

*“The funding made a significant impact on our program and our students. Thank you for giving us the opportunity to apply.”*





# Appendix



Funding Provided in 2023 for Programs to Operate in 2024



# Baby's Bounty

Time Frame	January 1, 2024 – December 31, 2024
Location	Clark County
Target Audience	Parents or legal guardian in living at or below FPL
Priority Area	Maternal Child Health Services

## Agency Description

Baby's Bounty serves families with infants and young children living at or below FPL in Southern Nevada. Their Mission is to support at-risk families living in poverty by providing critical infant-care education and the necessary supplies to provide a good start for every baby.

## Program Description

Baby Bundle Program - Provide aid to 1,200 families annually residing in Clark County, NV, who fall within 130% of the federal poverty level. The program includes critical services such as our Safe Sleep & Baby Basics program and a comprehensive Baby Bundle with the essential items required to ensure newborns' cleanliness, safety, and health.



# Boys & Girls Club of Southern Nevada

Time Frame	January 1, 2024 – December 31, 2024
Location	Clark County
Target Audience	Youth (Ages 13-18)
Priority Area	Workforce Development Services

## Agency Description

For over 60 year, Boys & Girls Clubs of Southern Nevada has served youth ages 6-18 across 13 locations throughout Southern Nevada. BGCSNV fills the gap between home and school by offering a welcoming and positive environment where kids and teens can have fun, participate in life-changing programs and build supportive relationships with their peers and caring adults.

## Program Description

Boys & Girls Clubs of Southern Nevada (BGCSNV) aims to establish three College & Career Centers within our Clubs to enhance our Workforce Development Programming. This initiative builds upon their existing programs such as Career Launch, Money Matters, Leaders in Training, and Diplomas to Degrees, all of which aim to empower teens with career exploration, financial literacy, job readiness, and post-secondary education preparation.

# Clark County Social Services

Time Frame	January 1, 2024 – December 31, 2024
Location	Clark County
Target Audience	Individuals experiencing homelessness
Priority Area	Housing Services

## Agency Description

Clark County Social Service (CCSS) provides a variety of services for disadvantaged residents of Clark County who are not assisted by other state, federal or local programs.

## Program Description

CCSS is the single point of entry for households without children needing assistance with housing. Individuals needing assistance will be assessed for all of CCSS programs, which include services available through the Continuum of Care, as well as services throughout the community; a process known by the community as Coordinated Intake.

# Corporation for Supportive Housing

Time Frame	January 1, 2024 – December 31, 2024
Location	Clark County
Target Audience	Individuals experiencing homelessness
Priority Area	Housing Services

## Agency Description

Corporation for Supportive Housing is committed to promoting affordable housing integrated with supportive services with the aim of fostering individual success and well-being. The main focus areas include lobbying for robust policies and adequate funding, investing impartially in communities, and fortifying the overall sector of supportive housing.

## Program Description

CSH is in the process of establishing supportive housing facility contracts. This impactful initiative is aimed at developing housing units specifically for SilverSummit Members, facilitating their transition into permanent, community-based living.

# Cure 4 The Kids

Time Frame	January 1, 2024 – December 31, 2024
Location	Clark County
Target Audience	Pediatric patients diagnosed with cancer or rare disease
Priority Area	Increase Access to Healthcare Services

## Agency Description

Cure 4 The Kids Foundation is Nevada's only childhood cancer and rare disease center with a multi-specialty team of healthcare professionals. Their mission is to provide pediatric specialty treatment and care to our patients regardless of financial considerations. Cure 4 The Kids works diligently to bring highly qualified medical healthcare professionals to our state to minimize Nevada's children needing to go out-of-state for care.

## Program Description

Recruitment of a pediatric subspecialist to the organization. This will advance cures and prevention of childhood diseases through clinical excellence, research, and innovation.

# Freedom House Sober Living

Time Frame	January 1, 2024 – December 31, 2024
Location	Clark County
Target Audience	Individuals with addiction issues
Priority Area	Justice Involved Community Reentry

## Agency Description

Freedom House Sober Living facility is used by addicts recovering from substance abuse, which serves as an interim environment between rehab and a return to their former lives. Their vision grew out of a need to have a clean and supportive place for people to live while they were in recovery. They primarily cater to people who have just come out of rehab and need a place to live that is structured and supporting for those in recovery.

## Program Description

Through transitional living and behavioral health programs, Freedom House's goal is to create long-term sobriety in individuals suffering from addiction. The hope is to reduce recidivism by combining programming and an intensive case management model to include services to address individual risk factors relating to drug addiction relapse, financial instability, homelessness, mental illness and more.

# HELP of Southern Nevada

Time Frame	January 1, 2024 – December 31, 2024
Location	Clark County
Target Audience	Youth (ages 16-24) experiencing homelessness
Priority Area	Housing Services

## Agency Description

HELP of Southern Nevada delivers crucial services to those with no, low, and moderate incomes in Clark County, Nevada. Offerings include emergency shelter, transitional housing, job training, life skills development, substance abuse treatment, and more. They also provide practical aids such as clothing, transportation, baby care items, and energy-saving measures.

## Program Description

Shannon West Homeless Youth Center (SWHYC) provides vital resources for homeless youths (aged 16-24). Accommodating up to 150 residents in dorm-style rooms and single studios, the facility includes multipurpose spaces, TV rooms, offices, clothing closets, and medical rooms. Over 80% of residents report physical, mental, or developmental disabilities.

# Hope Christian Health Center

Time Frame	January 1, 2024 – December 31, 2024
Location	Clark County
Target Audience	Women identified on gap lists
Priority Area	Access and Utilization of Preventative Care Services

## Agency Description

Hope Christian Health Center (HCHC) is a Federally Qualified Health Center (FQHC) and continues to surpass yearly targets set by the Health Resources and Services Administration (HRSA). Today, HCHC operates two service delivery sites in Clark County.

## Program Description

The Women's Health program, which ensures patients complete breast and/or cervical cancer screenings routinely. Community Health Worker (CHW) oversees this program and tracks the progress of each patient from the initial proactive call to schedule an appointment to the review of screening records and results by providers. Patients across all payer types will be contacted with the goal of empowering them to complete these vital, preventative care screenings.

# High Risk Pregnancy Center

Time Frame	January 1, 2024 – December 31, 2024
Location	Clark and Washoe Counties
Target Audience	Pregnant and postpartum Women with OUD
Priority Area	Maternal Child Health Services

## Agency Description

High Risk Pregnancy Center mission is to safeguard the well-being of expectant mothers and their unborn babies. The team of obstetric subspecialists bring an unparalleled level of training and experience in maternal-fetal medicine (MFM). The MFM doctors are equipped with the latest advanced tools for testing and treatment, ensuring that they can effectively minimize any potential pregnancy risks.

## Program Description

The Maternal Opioid Treatment Health Education Recovery (MOTHER) Program was designed to address the urgent need of individuals with Opioid Use Disorder in Nevada as a community-based outpatient program. The MOTHER Program in Nevada is a unique support system for pregnant and postpartum women struggling with substance abuse. It provides mental health services, medications for tackling opioid addiction, counseling, peer support, and specialized care for both mother and baby during and after pregnancy.



# Jobs 4 Nevada's Graduates

Time Frame	January 1, 2024 – December 31, 2024
Location	Carson City, Churchill, Clark, Douglas, Elko, Humboldt, Lander, Lincoln, Lyon, Mineral, Nye, Pershing, Washoe, White Pine Counties
Target Audience	At-risk youth
Priority Area	Workforce Development Services

## Agency Description

Jobs for Nevada's Graduates (J4NG) is a 501c3 nonprofit organization, independent affiliate of Jobs for America's Graduates (JAG), created by Governor Brian Sandoval in 2014 to address Nevada's high dropout rate and low youth employment rate.

## Program Description

J4NG is preparing today's generation of work-ready graduates that Nevada employers and businesses need to build economic prosperity. J4NG provides work-readiness classes, career associations and tutoring/mentoring. They work in public high schools and with private employers to prepare at-risk youths for employment and connect them to jobs, apprenticeships and post-secondary education opportunities to help them achieve their own American Dream.

# Las Vegas Rescue Mission

Time Frame	January 1, 2024 – December 31, 2024
Location	Clark County
Target Audience	Adults Male & Female, LGBTQIA+ with substance abuse, mental health, homelessness & high risk
Priority Area:	Housing Services

## Agency Description

The Las Vegas Rescue Mission (LVRM), located in the heart of a high-risk area, has been supporting local homeless individuals and families since 1970. LVRM offers hope and assistance through food, shelter, daily needs, and addiction recovery services, grounded in the teachings of Jesus Christ.

## Program Description

To provide transitional living to 10 individuals on a monthly basis for roughly 90 days. Individuals are transitioned into sober living and provided sponsorships where LVRM pays for 1-3 months of sober living for those who completed the program. Additionally provides for a part-time Medical Technician to coordinate health care while in the program and during transition.

Time Frame	January 1, 2024 – December 31, 2024
Location	Clark County Washoe County
Target Audience	Medicaid Members
Priority Area	Increase Access to Healthcare Services

## Agency Description

MobexHealth (formerly known as Mobility Exchange) was established in 2010 with a vision to revolutionize the patient care process. Committed to creating cutting-edge solutions for providers, payers, and patients alike. These revolutionary solutions are designed to promote whole-person care and enhance health equity in all communities, driving the mission to advance healthcare innovation.

## Program Description

In 2022, SilverSummit Healthplan and Mobex Health introduced five mobile resource tablets in Clark and Washoe County to enhance connectivity and care access. These tablets allowed members to interact with support services. By 2023, the program had grown to twenty devices in thirteen locations, thanks to departmental and quality funding. As of 2024, the scheme operates fifteen kiosks across 14 sites.

# NAMI Southern Nevada

Time Frame	January 1, 2024 – December 31, 2024
Location	Clark County
Target Audience	Families and peers impacted by mental health conditions
Priority Area	Increase Access to Healthcare Services

## Agency Description

The National Alliance on Mental Illness (NAMI) is the nation's largest grassroots mental health organization dedicated to individuals impacted by mental illness, since 1979. NAMI works to serve local residents of the greater Las Vegas area, who experience a mental illness diagnosis or mental health challenge, through Peer- and Community-based Programming.

## Program Description

The Peer Recovery Support Specialist Intern (PRSS-I) program is for individuals who have experienced recovery from substance use or mental health issues. It includes in-depth skills training from Foundations for Recovery and additional instruction from community partners and NAMI. Successful completion of this training enables the PRSS Intern to qualify for an examination, leading to a respected certification from the Nevada Certification Board.

# Nevada Primary Care Association

---

Time Frame	January 1, 2024 – December 31, 2024
Location	Carson City, Clark County, Elko and Washoe County
Target Audience	Federally Qualified Health Centers (FQHC)
Priority Area	Increase Access to Healthcare Services

## Agency Description

Nevada Primary Care Association (NVPCA) is dedicated to assisting health centers with the implementation of solid business practices and community-responsive programs to improve service delivery effectiveness and efficiency.

## Program Description

The Nevada Primary Care Association will collaborate with the Mobile Healthcare Association to provide training and technical assistance to FQHCs on how to build, operationalize, and sustain a successful mobile unit program.

# Phase 1 Foundation

Time Frame	January 1, 2024 – December 31, 2024
Location	Clark County
Target Audience	At-risk youth (ages 11-18)
Priority Area	Youth Services

## Agency Description

Phase 1 Foundation was founded in 2014 as a non-profit 501(c)3 organization. Phase 1's mission is to Empower the Youth. Phase 1 is committed to developing student-athletes in all areas of academics, life skills, and sport. The combination of academic curriculum, life skills, and sports performance assures at-risk student-athletes have all the necessary resources to be successful.

## Program Description

Phase 1 is committed to academics, life skills, and sports performance for at-risk student-athletes to be successful. Phase 1 focuses on sports-based youth development, which provides a holistic approach, using sports as a mechanism to promote positive youth development.

Time Frame	January 1, 2024 – December 31, 2024
Location	Clark County
Target Audience	Under-Served, under-resourced and otherwise neglected communities
Priority Area	Housing Services

## Agency Description

Puentes is a 501(c)3, nonprofit organization focused on reducing structural inequality through the development of sustainable support and services which improve the social determinants of health in the communities they serve. They serve communities at a higher risk for poor outcomes as a result of the barriers they experience to social, economic, political and environmental resources. Inherently, these are most often Black, Brown and Senior communities.

## Program Description

The program provides SilverSummit Members with emergency rent, temporary shelter and security deposit. Including other housing assistance, as in comprehensive case management to leverage other programs and services necessary to achieving positive, long-term sustainable outcomes that break the cycle of dependency on social services.

Time Frame	January 1, 2024 – December 31, 2024
Location	Clark County
Target Audience	Hispanic low-income, uninsured or Medicaid eligible individuals/families with children
Priority Area	Housing Services

## Agency Description

Research Education and Access to Community Health Corporation (R.E.A.C.H.) is a non-profit IRS Tax-Exempt Organization 501(c)3 established in February 2011. Their mission is to provide evidence-based research, information, development, and implementation of programs to improve community health services and access to care and other services in the State of Nevada, regardless of race, creed, religion, color, sex, marital status, or physical challenges.

## Program Description

The goal is to help clients delay an eviction or catch up on payments to arrears to reduce the proportion of individuals and/or families that spend more than 30% of their income on housing for all in the target that will be served to help them stay in their homes.



Time Frame	January 1, 2024 – December 31, 2024
Location	Clark County
Target Audience	SSHP Members Prospective Members Providers
Priority Area	Access & Utilization of Preventative Care Services

## Agency Description

Novum Health (formerly Summit Behavioral Health and Nevada Behavioral Health) provides services to meet the emergent needs, both psychosocial and psychiatric, ongoing in the evolving mental health field. Novum cultivates the finest practitioners in behavioral health to meet and exceed the needs of members.

## Program Description

Novum Health's comprehensive suite of services includes Mobile Assessment, Embedded Care Coordination, and Behavioral and Medical Case Management. They assess patient needs in various settings, coordinate care, provide resources, and facilitate seamless transitions between care providers. Their in-depth reporting and data analysis help optimize utilization. The patient-centered approach ensures access to essential services and resources, promoting overall well-being and health integration.

# The Just One Project

Time Frame	January 1, 2024 – December 31, 2024
Location	Clark County
Target Audience	SSHP Members
Priority Area	Workforce Development Services

## Agency Description

The Just One Project, a 501(c)3 nonprofit, is Southern Nevada’s largest mobile food pantry, serving more than 20,000 people monthly through the Food For All Project that focuses on bringing nutrition directly to food-insecure populations via its community market, mobile food pantry, valley-wide pop ups and deliveries.

## Program Description

Monthly delivery of culturally appropriate food boxes to Members participating in the *Nourish and Thrive Together* workforce development program.

# The Just One Project

Time Frame	January 1, 2024 – December 31, 2024
Location	Clark County
Target Audience	SSHP Members
Priority Area	Housing Services

## Agency Description

The Just One Project, a 501(c)3 nonprofit, is Southern Nevada’s largest mobile food pantry, serving more than 20,000 people monthly through the Food For All Project that focuses on bringing nutrition directly to food-insecure populations via its community market, mobile food pantry, valley-wide pop ups and deliveries.

## Program Description

To support SilverSummit Healthplan Members, who visit the food and pop-up markets, with rental and utility assistance.

# The Salvation Army

Time Frame	January 1, 2024 – December 31, 2024
Location	Clark County
Target Audience	SSHP Members experiencing homelessness and who are housing ready
Priority Area	Housing Services

## Agency Description

The Salvation Army, an international movement, is an evangelical part of the universal Christian Church. The Salvation Army's purpose is to meet human needs without discrimination. The Salvation Army's objectives in Las Vegas are tied to its purpose through the specific programs it operates. The objectives are accomplished by providing programs that serve the homeless, veterans, and others in need of support.

## Program Description

Transitional housing placement and tenancy support for SilverSummit Members from homelessness into supportive housing program.

Time Frame	January 1, 2024 – December 31, 2024
Location	Clark County
Target Audience	SSHP Members
Priority Area	Justice Involved Community Reentry

## Agency Description

WestCare’s mission is to empower everyone with whom they come into contact to engage in a process of healing, growth and change benefiting themselves, their families, coworkers, and communities.

## Program Description

Provide services consisting of Residential and Transitional Services for confirmed SilverSummit Healthplan Members. For Substance Use Disorder / Co-Occurring disorder (SUD/COD) treatment services, WestCare offers a comprehensive continuum of care that includes residential treatment, intense outpatient therapy, and outpatient care.