

Patients, Applied Behavior Analysis (ABA) and Adaptive Behavior Treatment (ABT)

Nevada Medicaid (FFS/MCO), State Fiscal Year 2022 Q1 (July 1, 2021 - September 30, 2021)

Applied Behavior Analysis (ABA)

Number of ABA Patients	2022
ABA	678

Number of ABA Patients	2022	
	Qtr 1	Total
ABA	678	678

Number of ABA Patients	2022	
	Qtr 1	Total
FFS	451	451
MCO	229	229
Total	680	680

Adaptive Behavior Treatment (ABT)

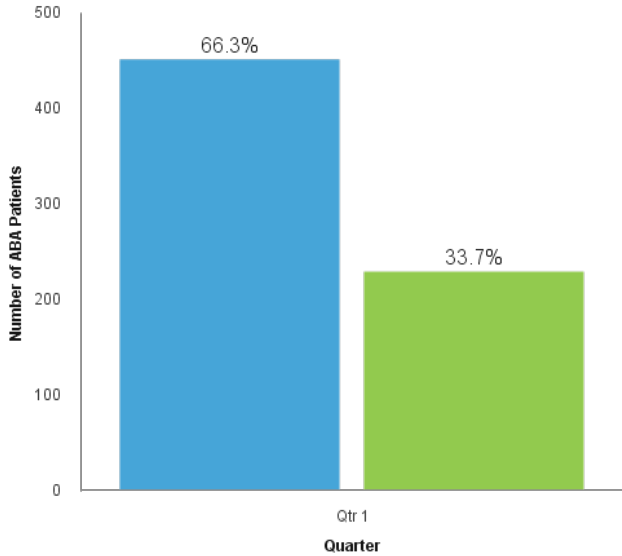
Number of ABT Patients	2022
ABT	606

Number of ABT Patients	2022	
	Qtr 1	Total
ABT	606	606

Number of ABT Patients	2022	
	Qtr 1	Total
FFS	429	429
MCO	179	179
Total	608	608

ABA Patients by Benefit Plan (FFS/MCO)

● FFS ● MCO



ABT Patients by Procedure and Benefit Plan

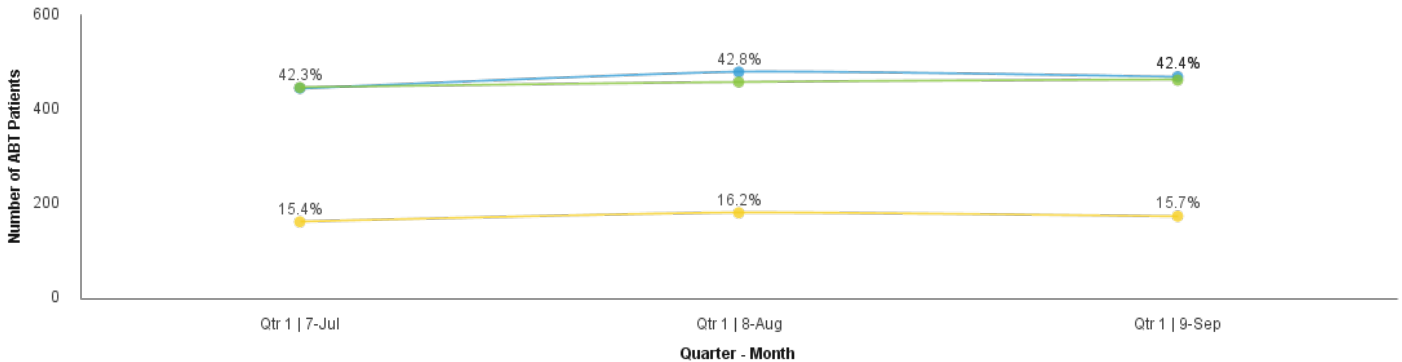
Number of ABT Patients		2022	
		Qtr 1	Total
FFS	97153 - ADAPTIVE BEHAVIOR TX BY TECH	397	397
	97155 - ADAPT BEHAVIOR TX PHYS/QHP	391	391
	97156 - FAM ADAPT BHV TX GDN PHY/QHP	197	197
	Total	985	985
MCO	97153 - ADAPTIVE BEHAVIOR TX BY TECH	160	160
	97155 - ADAPT BEHAVIOR TX PHYS/QHP	173	173
	97156 - FAM ADAPT BHV TX GDN PHY/QHP	94	94
	Total	427	427
Total		1,412	1,412

Patient counts are unique; however, if a patient was covered under more than one plan during the indicated time period, they were counted one time under each plan.

Service Hours by Procedure, ABT, Nevada Medicaid (FFS/MCO), July 1, 2021 - September 30, 2021

CPT HCPCS Procedure Code and Description

● 97153 - ADAPTIVE BEHAVIOR TX BY TECH ● 97155 - ADAPT BEHAVIOR TX PHYS/QHP ● 97156 - FAM ADAPT BHV TX GDN PHY/QHP



Patients, Applied Behavior Analysis (ABA) and Adaptive Behavior Treatment (ABT)

Nevada Medicaid (FFS/MCO), State Fiscal Year 2022 Q1 (July 1, 2021 - September 30, 2021)

Applied Behavior Analysis (ABA)

Number of ABA Providers	2022
ABA	58

Number of ABA Providers	2022	Total
	Qtr 1	
ABA	58	58

Number of ABA Providers	2022	Total
	Qtr 1	
FFS	47	47
MCO	34	34
Total	81	81

Adaptive Behavior Treatment (ABT)

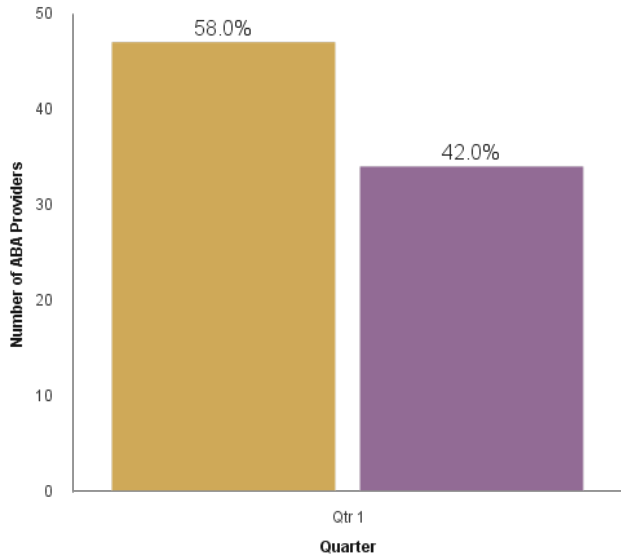
Number of ABT Providers	2022
ABT	54

Number of ABT Providers	2022	Total
	Qtr 1	
ABT	54	54

Number of ABT Providers	2022	Total
	Qtr 1	
FFS	45	45
MCO	32	32
Total	77	77

ABA Providers by Benefit Plan

Plan (FFS/MCO)
● FFS ● MCO



ABT Providers by Procedure and Benefit Plan

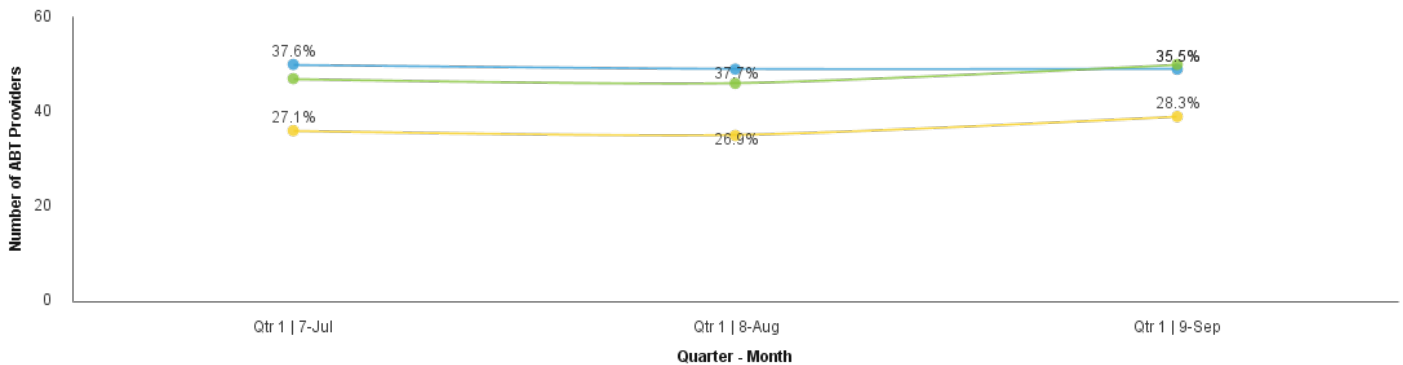
		Number of ABT Providers	
		2022	Total
FFS	97153 - ADAPTIVE BEHAVIOR TX BY TECH	44	44
	97155 - ADAPT BEHAVIOR TX PHYS/QHP	43	43
	97156 - FAM ADAPT BHV TX GDN PHY/QHP	37	37
	Total	124	124
MCO	97153 - ADAPTIVE BEHAVIOR TX BY TECH	28	28
	97155 - ADAPT BEHAVIOR TX PHYS/QHP	31	31
	97156 - FAM ADAPT BHV TX GDN PHY/QHP	28	28
	Total	87	87
Total		211	211

Provider counts are unique; however, if a provider was covered under more than one plan during the indicated time period, they were counted one time under each plan.

Service Hours by Procedure, ABT, Nevada Medicaid (FFS/MCO), July 1, 2021 - September 30, 2021

CPT HCPCS Procedure Code and Description

● 97153 - ADAPTIVE BEHAVIOR TX BY TECH ● 97155 - ADAPT BEHAVIOR TX PHYS/QHP ● 97156 - FAM ADAPT BHV TX GDN PHY/QHP



Patients, Applied Behavior Analysis (ABA) and Adaptive Behavior Treatment (ABT)

Nevada Medicaid (FFS/MCO), State Fiscal Year 2022 Q1 (July 1, 2021 - September 30, 2021)

Applied Behavior Analysis (ABA)

Qty of Services	2022
ABA	350,570.25

Qty of Services	2022	Total
	Qtr 1	
ABA	350,570	350,570.25

Qty of Services	2022	Total
	Qtr 1	
FFS	251,846	251,846
MCO	98,724	98,724.25
Total	350,570.25	350,570.25

Adaptive Behavior Treatment (ABT)

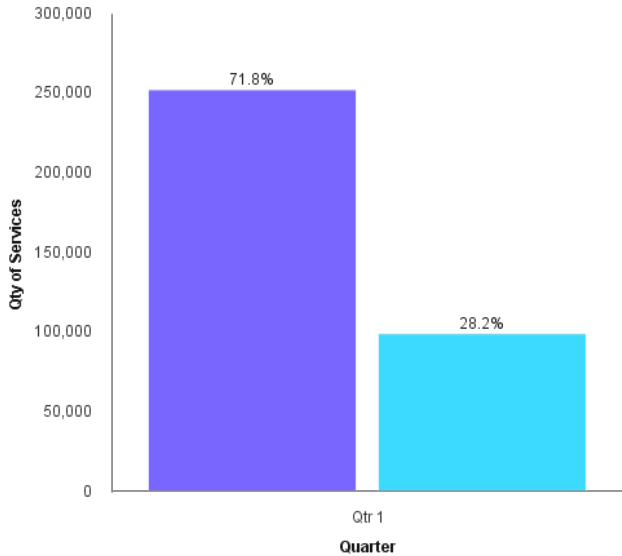
Qty of Services	2022
ABT	336,886.25

Qty of Services	2022	Total
	Qtr 1	
ABT	336,886	336,886.25

Qty of Services	2022	Total
	Qtr 1	
FFS	240,705	240,705
MCO	96,181	96,181.25
Total	336,886.25	336,886.25

ABA Quantity of Services by Benefit Plan (FFS/MCO)

● FFS ● MCO



ABT Quantity of Services by Procedure and Benefit Plan

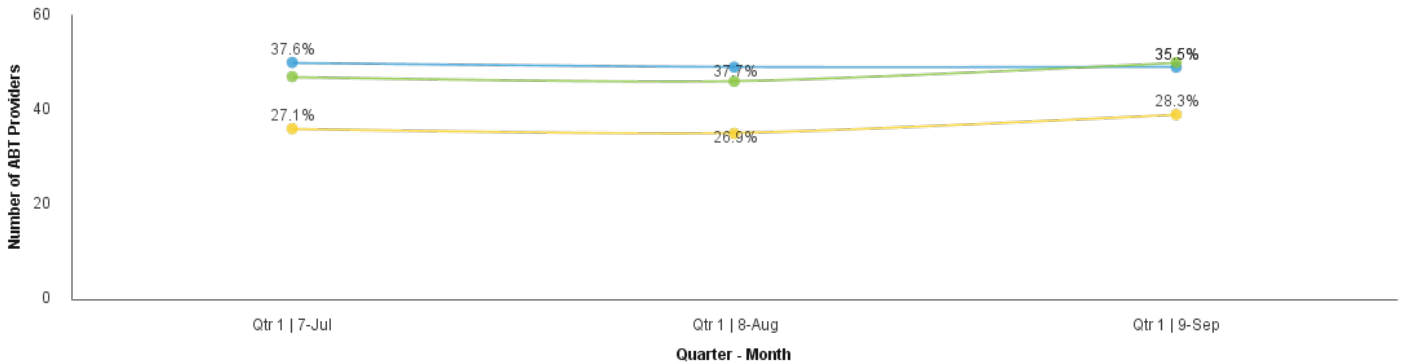
Qty of Services		2022	Total
		Qtr 1	
FFS	97153 - ADAPTIVE BEHAVIOR TX BY TECH	197,314	197,314
	97155 - ADAPT BEHAVIOR TX PHYS/QHP	40,472	40,472
	97156 - FAM ADAPT BHV TX GDN PHY/QHP	2,919	2,919
	Total	240,705	240,705
MCO	97153 - ADAPTIVE BEHAVIOR TX BY TECH	77,068	77,068.25
	97155 - ADAPT BEHAVIOR TX PHYS/QHP	18,246	18,246
	97156 - FAM ADAPT BHV TX GDN PHY/QHP	867	867
	Total	96,181.25	96,181.25
Total		336,886.25	336,886.25

Due to the way that MCO claims are processed, the quantity of services for MCO claims represent the billed quantity of services. Please note that this may be significantly different than the actual paid quantity of services.

Service Hours by Procedure, ABT, Nevada Medicaid (FFS/MCO), July 1, 2021 - September 30, 2021

CPT HCPCS Procedure Code and Description

● 97153 - ADAPTIVE BEHAVIOR TX BY TECH ● 97155 - ADAPT BEHAVIOR TX PHYS/QHP ● 97156 - FAM ADAPT BHV TX GDN PHY/QHP



Department of Health and Human Services

Office of Analytics

Technical Notes, Applied Behavior Analysis (ABA) and Adaptive Behavior Treatment (ABT)

State Fiscal Year 2022 Q1 (July 1, 2021 - September 30, 2021)

Data was gathered and the report was authored using the Nevada Medicaid Data Warehouse DDM Business Views. The Division of Health Care Financing and Policy (DHCFP) data warehouse is comprised of claims data submitted by over 35,000 Medicaid providers from within Nevada and across the country. While DHCFP staff conscientiously make every effort to validate these data through continuous provider education and the use of highly experienced audit staff, the Division relies heavily on providers to submit accurate and complete information on Medicaid patients. It should therefore be understood by the users of DHCFP reports on disease morbidity and patient health that the data source for these reports are based solely on patient claims data and may not be a complete and comprehensive health record. The data for this report is procured from databases that are currently being modernized from their legacy versions. Considering the unpredictable technical challenges that may arise during the migration of data from legacy to modernized versions of the databases, it is advised to use the data with caution.

Behavioral and Mental Health Providers: Billing or Performing providers that were enrolled in Nevada Medicaid and providing services during the indicated time period. This report time period is State Fiscal Year. Data gathered are based on the first date of service indicated on a paid claim. Fee For Service (FFS) and Managed Care Organization (MCO) claims that were paid at the header and detail level were collected using a data dimensional model that summarizes Medicaid claims data. The Nevada Medicaid Data Warehouse was queried on the day noted on the bottom of this report. Patient counts are unique; however, if a patient was eligible under both FFS and MCO during the indicated time period, they were counted one time under each plan. Provider data are based on the Medicaid-enrolled Billing and Performing provider information reported on a claim. Claims without a provider type code were excluded from the data. Provider counts are unique; however, if a provider was enrolled under both FFS and MCO during the indicated time period, they were counted one time under each plan. Due to the MCO's payment structure, the quantity of services reported are based on the billed quantity of services; therefore, use caution when analyzing this data as the quantity of services actually paid may be significantly lower than the quantity billed. Due to claims processing, data for 2021 are preliminary and subject to change. Services provided to all ages were included in this analysis. Provider Type 85 was used to identify Applied Behavior Analysis (ABA) providers and CPT Procedure Codes: 97153, 97155, 97156 were used to identify Adaptive Behavior Treatment (ABT) services.

The following Provider Type codes and Procedure codes were used to identify the populations defined in this analysis.

Applied Behavior Analysis (ABA)

Provider Type Description	Number of Providers	Number of Patients by Provider
20 - Physician M.D. Osteopath D.O.	1	5
26 - Psychologist	4	46
34 - Therapy	2	20
85 - Applied Behavior Analysis (ABA)	50	599
Overall - Total	57	670

Adaptive Behavior Treatment (ABT)

CPT HCPCS Procedure Code and Description	Number of ABT Providers	Number of ABT Patients
97155 - ADAPT BEHAVIOR TX PHYS/QHP	52	563
97156 - FAM ADAPT BHV TX GDN PHY/QHP	45	291
97153 - ADAPTIVE BEHAVIOR TX BY TECH	51	555
Overall - Total	148	1,409