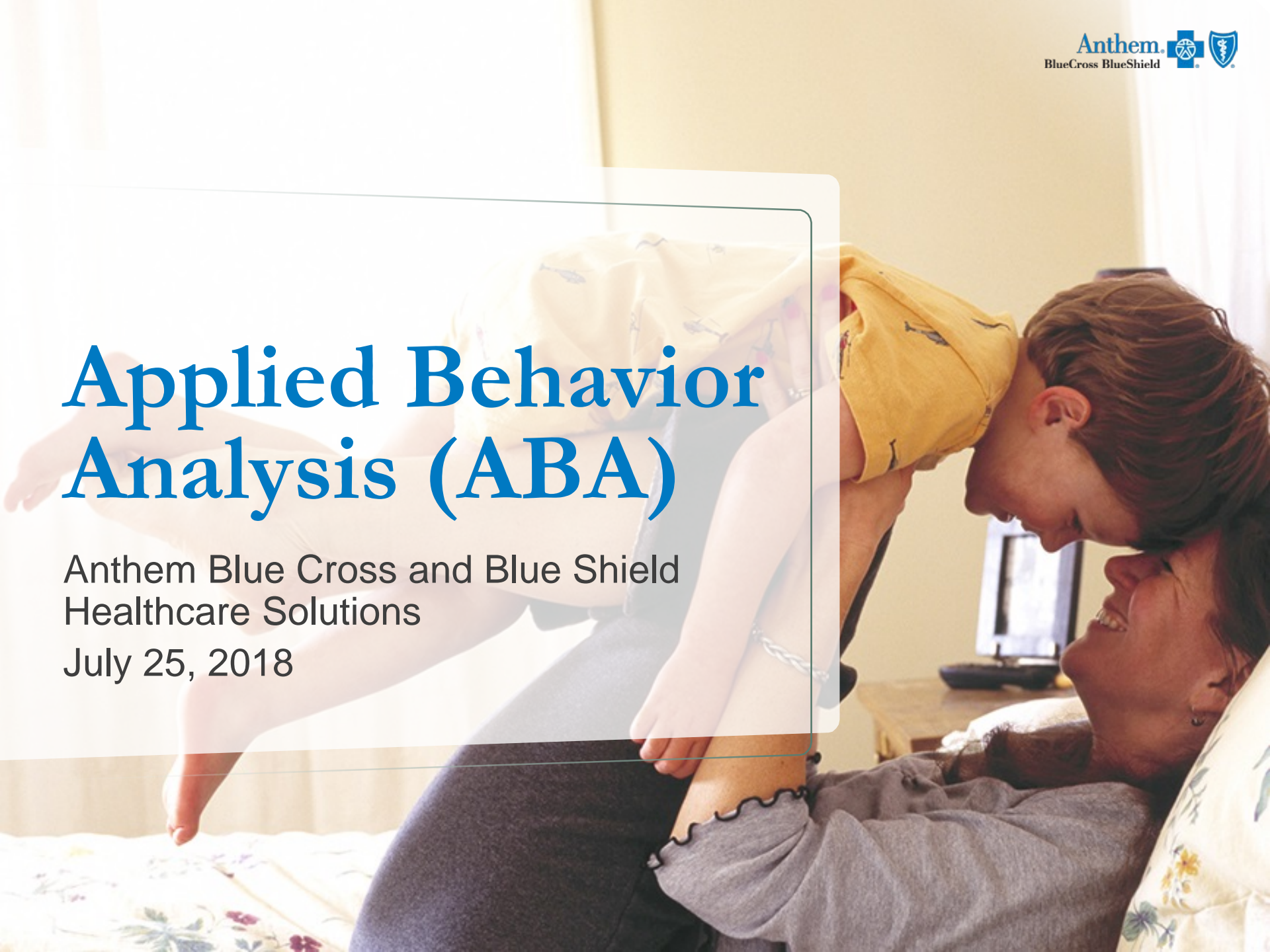


# Applied Behavior Analysis (ABA)

Anthem Blue Cross and Blue Shield  
Healthcare Solutions

July 25, 2018



# Provider Enrollment

Please forward the following items to [nv1provsvcs@anthem.com](mailto:nv1provsvcs@anthem.com)

- Current W9
- A Letter or Intent ( LOI)

Please ensure the following information is included in your letter of intent (if applicable)

- Location of the agency
- How long the agency has been in business
- Is the agency and/or associated providers currently enrolled with the Nevada Medicaid Program
- Indicate the Provider Type based on your enrollment with the Nevada Medicaid Program.

# Provider Enrollment con't

- Detail the services the agency provides
- What type of Quality Management Program does the agency have in place
- Indicate if Medication Management is provided
- Identify the Medical Director
- Detail how many hours a week the Medical Director works out of the agency?
- Advise if all providers are board certified?



# ABA Authorizations

**ABA Assessment Codes *DO NOT* require Prior Auth:**

0359T, 0360T, 0361T, 0362T, 0363T

**ABA Treatment Codes DO require Prior Auth:**

0364T, 0365T, 0366T, 0367T, 0368T, 0369T, 0370T, 0372T, 0373T, 0374T, S5110, S5110Q

**Service Limitation:** ABA services cannot be authorized at the same time as RMH (Rehabilitative Mental Health) services

**Authorization Requests:** FA-11E can be submitted through Availity.

**The State's complete ABA resource:** includes MSM Chapter 1500 guide to coverage, limitations, auth requirements, and treatment planning

<http://dhcfp.nv.gov/Pgms/CPT/ABA/>



# Claims Submission

You can access secure claims functionality in two ways:

**#1 Visit [<https://mediproviders.anthem.com/nv>] and select Login or Register**

**#2 Go directly to [<https://www.availity.com.>]**



# Claims Submission

## To submit a claim:

- From the Availity home page (<https://www.availity.com>), choose **Claims & Payments** from the top navigation.
- Select **Type of claim** from the drop-down menu.

## To check the status of a claim:

- From the Availity home page (<https://www.availity.com>), select **Claims & Payments** from the top navigation.
- Select **Claim Status Inquiry** from the drop-down menu.
- Submit an inquiry and review the *Claims Status Detail* page



# Claims Submission

To submit claims via mail

Paper claims should be mailed to the address below:

**Anthem Blue Cross and Blue Shield Healthcare Solutions  
P.O. Box 61010  
Virginia Beach, VA 23466-1010**



# Key Contacts

If you have questions or need help with any item, contact:

Your local Provider Relations representative  
or  
Provider Services via the following:

- **1-844-396-2330**
- [nv1provsvcs@anthem.com](mailto:nv1provsvcs@anthem.com)







# THANK YOU FOR YOUR TIME

Altamit Lewis, MS, LCPC  
Manager Behavioral Health  
Services

