



STATE OF NEVADA
DEPARTMENT OF HEALTH AND HUMAN SERVICES
DIVISION OF HEALTH CARE FINANCING AND POLICY
FEE FOR SERVICE

Psychotropic Trending Report

All Children Age 0 – 17
July 2012 – June 2014

Psychotropic Trending Report

Summary

This report shows the utilization of psychotropic medication use in children from newborn through 17 years-old. Only children enrolled in Nevada Medicaid and Nevada Check Up who filled their prescription through an outpatient pharmacy are included in this report. Children enrolled in Managed Care Organizations are not included. All the medications listed in this report require prior authorization for this age group.

Six classes of medications are included:

- **Antianxiety:** Medications such as benzodiazepines and a few other miscellaneous agents. Utilization trends in this category can be misleading because many of these agents are also used to treat epilepsy or seizure disorders and for sedation for minor medical procedures (dental procedures for example).
- **Anticonvulsants:** Medications designed to treat epilepsy and other seizure disorders. This class of medications is also frequently used to treat a variety other conditions such bipolar, mood disorder, migraine headaches and fibromyalgia among others.
- **Antidepressants:** Most medications in this class are actually used to treat depression or related symptoms. There are a few exceptions, but they are not common.
- **Sedatives:** Medications used to induce sleep. This class also contains medications such as phenobarbital and chloral hydrate that are used for seizure disorders and sedation for minor medical treatments, respectively.
- **Antipsychotics:** A class of medications most frequently indicated to treat schizophrenia. Different agents are indicated to treat other psychiatric diseases such as bipolar disorder, depression and symptoms related to autism.
- **ADHD and Stimulants:** Medications used to treat Attention Deficit Hyperactivity Disorder (ADHD) or Attention Deficit Disorder (ADD). This class includes stimulant agents as well as other non-stimulant medications used to treat ADHD and ADD.

Trends

The charts and graphs on pages two and three show drug class total utilization by age group for the two-year period (July 2012 to June 2014). Utilization for the age group 0-4 in the antianxiety, anticonvulsant and sedative class is likely justified by use in seizure disorders or temporary sedation for medical procedures. Antipsychotic use in adolescents and teens remains a focus for the division to assure these medications are being used appropriately.

The following pages, 4 – 8, show the trends over time for utilization. The graphs by year show an increase in 2013 because that is the only full year shown, whereas 2012 and 2014 are only partial years. Pages 6 – 8 show the claims by quarter where we can see a better representation of utilization. Ages 0 – 4 years-old appear to be volatile in nearly all medication categories, but this is likely due to the small number of recipients where one expensive claim can skew the quarter. Overall utilization per recipient is remaining relatively steady. The total number of claims has increased over the two-year period. The average payment for recipient for nearly all the medication classes continues to rise quarter over quarter. This reflects trends observed across the book of business. Generic medication prices are going up and new novel brand medications are released with a high price point.



STATE OF NEVADA
DEPARTMENT OF HEALTH AND HUMAN SERVICES
DIVISION OF HEALTHCARE FINANCING AND POLICY - FEE FOR SERVICE

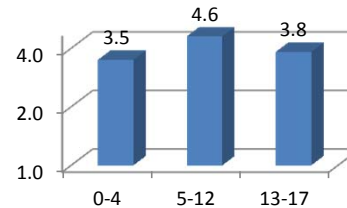


Psychotropic Trend Summary by Age (July 2012 - June 2014)

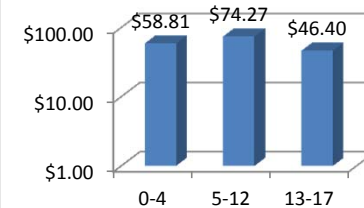
Antianxiety (July 2012 - June 2014)

Age Group	Recipients	Paid Claims	Total Payment	Avg Paid Claims/ Recipient	Avg Payment/ Recipient
0-4	111	387	\$ 6,527.42	3.5	\$58.81
5-12	369	1700	\$ 27,406.58	4.6	\$74.27
13-17	498	1909	\$ 23,108.96	3.8	\$46.40

Avg Paid Claims/ Recipient



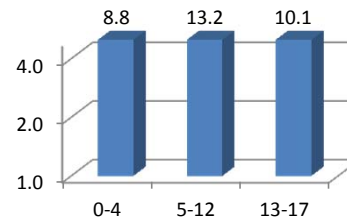
Avg Payment/ Recipient



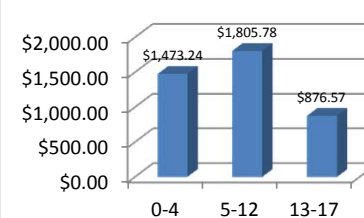
Anticonvulsants (July 2012 - June 2014)

Age Group	Recipients	Paid Claims	Total Payment	Avg Paid Claims/ Recipient	Avg Payment/ Recipient
0-4	271	2388	\$ 399,247.99	8.8	\$1,473.24
5-12	1227	16238	\$ 2,215,697.57	13.2	\$1,805.78
13-17	1436	14473	\$ 1,258,757.71	10.1	\$876.57

Avg Paid Claims/ Recipient



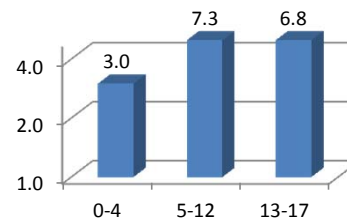
Avg Payment/ Recipient



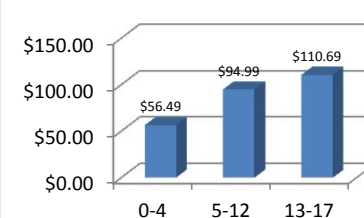
Antidepressants (July 2012 - June 2014)

Age Group	Recipients	Paid Claims	Total Payment	Avg Paid Claims/ Recipient	Avg Payment/ Recipient
0-4	14	42	\$ 790.80	3.0	\$56.49
5-12	1048	7641	\$ 99,553.66	7.3	\$94.99
13-17	1888	12917	\$ 208,987.69	6.8	\$110.69

Avg Paid Claims/ Recipient



Avg Payment/ Recipient



Age Group: Based on the Age of the Recipient as of the time of the Claim.

Recipients: Number of Unique Members per Age Group.

Paid Claims: Number of Unique Claims per Age Group.

Total Payment: Total Amount Paid on the Unique Claims.

Avg Paid Claims/Recipient: The average number of Unique Claims per Unique Member. This is done by dividing the Paid Claims by the Recipients for the given Date Range and Age Group.

Avg Payment/Recipient: The average payment of Unique Claims per Unique Member. This is done by dividing the Total Payment by the Recipients for the given Date Range and Age Group.

Includes only Fee For Service claims.



STATE OF NEVADA
DEPARTMENT OF HEALTH AND HUMAN SERVICES
DIVISION OF HEALTHCARE FINANCING AND POLICY - FEE FOR SERVICE

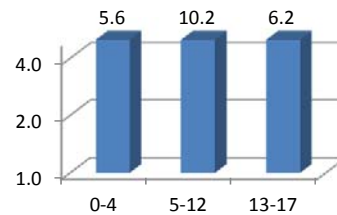


Psychotropic Trend Summary by Age (July 2012 - June 2014)

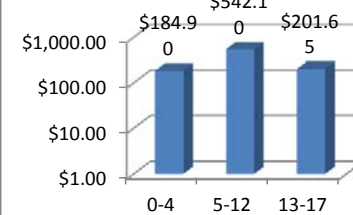
Sedatives (July 2012 - June 2014)

Age Group	Recipients	Paid Claims	Total Payment	Avg Paid Claims/ Recipient	Avg Payment/ Recipient
0-4	132	744	\$ 24,407.04	5.6	\$184.90
5-12	83	843	\$ 44,994.11	10.2	\$542.10
13-17	141	873	\$ 28,432.21	6.2	\$201.65

Avg Paid Claims/ Recipient



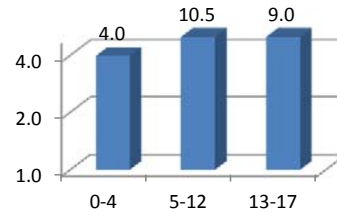
Avg Payment/ Recipient



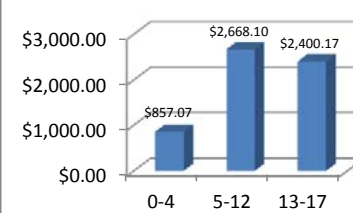
Antipsychotics (July 2012 - June 2014)

Age Group	Recipients	Paid Claims	Total Payment	Avg Paid Claims/ Recipient	Avg Payment/ Recipient
0-4	42	167	\$ 35,997.02	4.0	\$857.07
5-12	2310	24241	\$ 6,163,309.98	10.5	\$2,668.10
13-17	2070	18561	\$ 4,968,343.63	9.0	\$2,400.17

Avg Paid Claims/ Recipient



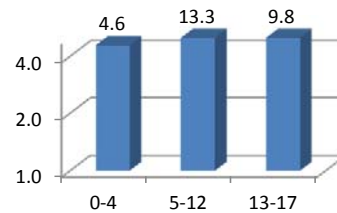
Avg Payment/ Recipient



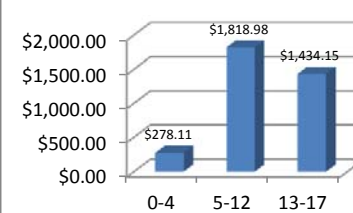
ADHD & Stimulants (July 2012 - June 2014)

Age Group	Recipients	Paid Claims	Total Payment	Avg Paid Claims/ Recipient	Avg Payment/ Recipient
0-4	88	402	\$ 24,473.51	4.6	\$278.11
5-12	4484	59534	\$ 8,156,294.85	13.3	\$1,818.98
13-17	2524	24854	\$ 3,619,793.82	9.8	\$1,434.15

Avg Paid Claims/ Recipient



Avg Payment/ Recipient



Age Group: Based on the Age of the Recipient as of the time of the Claim.

Recipients: Number of Unique Members per Age Group.

Paid Claims: Number of Unique Claims per Age Group.

Total Payment: Total Amount Paid on the Unique Claims.

Avg Paid Claims/Recipient: The average number of Unique Claims per Unique Member. This is done by dividing the Paid Claims by the Recipients for the given Date Range and Age Group.

Avg Payment/Recipient: The average payment of Unique Claims per Unique Member. This is done by dividing the Total Payment by the Recipients for the given Date Range and Age Group.

Includes only Fee For Service claims.

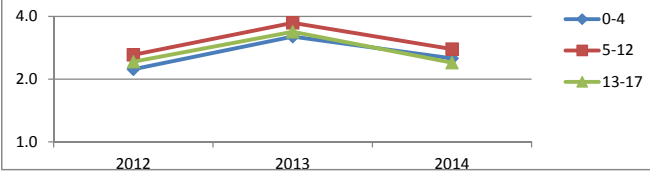


Psychotropic Trend Summary by Age (July 2012 - June 2014)

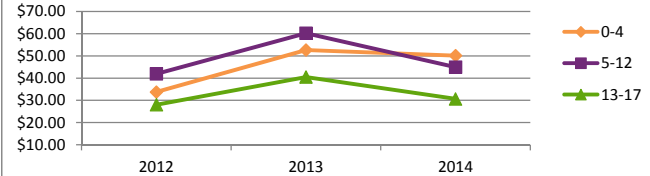
Antianxiety (July 2012 - June 2014)

Year Filled	Age Group	Recipients	Paid Claims	Total Payment	Avg Paid Claims/Recipient	Avg Payment/Recipient
2012	0-4	43	96	\$ 1,451.84	2.2	\$33.76
2013	0-4	65	208	\$ 3,421.08	3.2	\$52.63
2014	0-4	33	83	\$ 1,654.50	2.5	\$50.14
2012	5-12	149	390	\$ 6,247.24	2.6	\$41.93
2013	5-12	229	853	\$ 13,789.95	3.7	\$60.22
2014	5-12	164	457	\$ 7,369.39	2.8	\$44.94
2012	13-17	164	398	\$ 4,594.28	2.4	\$28.01
2013	13-17	302	1019	\$ 12,230.52	3.4	\$40.50
2014	13-17	205	492	\$ 6,284.16	2.4	\$30.65

Antianxiety: Avg Claims Per Recipient By Age



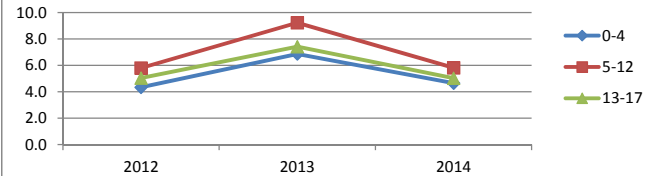
Antianxiety: Avg Payment Per Recipient By Age



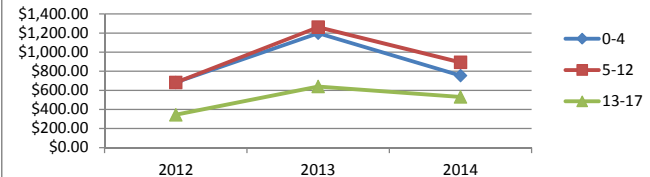
Anticonvulsants (July 2012 - June 2014)

Year Filled	Age Group	Recipients	Paid Claims	Total Payment	Avg Paid Claims/Recipient	Avg Payment/Recipient
2012	0-4	133	577	\$ 90,784.19	4.3	\$682.59
2013	0-4	177	1215	\$ 212,051.20	6.9	\$1,198.03
2014	0-4	128	596	\$ 96,412.60	4.7	\$753.22
2012	5-12	672	3898	\$ 458,171.38	5.8	\$681.80
2013	5-12	871	8040	\$ 1,098,236.28	9.2	\$1,260.89
2014	5-12	739	4300	\$ 659,289.91	5.8	\$892.14
2012	13-17	680	3429	\$ 234,001.67	5.0	\$344.12
2013	13-17	986	7314	\$ 631,007.87	7.4	\$639.97
2014	13-17	742	3730	\$ 393,748.17	5.0	\$530.66

Anticonvulsants: Avg Claims Per Recipient By Age



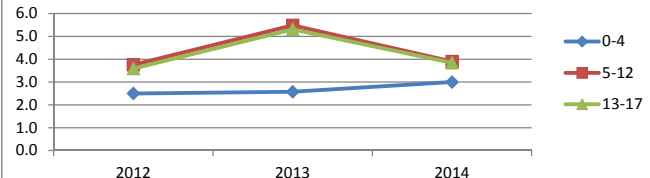
Anticonvulsants: Avg Payment Per Recipient By Age



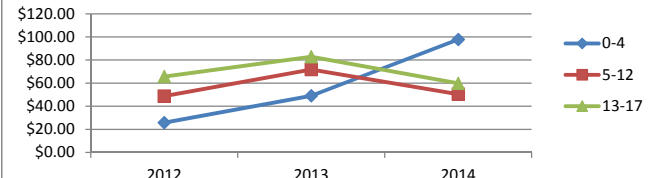
Antidepressants (July 2012 - June 2014)

Year Filled	Age Group	Recipients	Paid Claims	Total Payment	Avg Paid Claims/Recipient	Avg Payment/Recipient
2012	0-4	6	15	\$ 154.47	2.5	\$25.75
2013	0-4	7	18	\$ 343.13	2.6	\$49.02
2014	0-4	3	9	\$ 293.20	3.0	\$97.73
2012	5-12	469	1760	\$ 22,849.75	3.8	\$48.72
2013	5-12	699	3831	\$ 50,168.95	5.5	\$71.77
2014	5-12	526	2050	\$ 26,534.96	3.9	\$50.45
2012	13-17	784	2817	\$ 51,513.89	3.6	\$65.71
2013	13-17	1227	6510	\$ 101,553.19	5.3	\$82.77
2014	13-17	934	3590	\$ 55,920.61	3.8	\$59.87

Antidepressants: Avg Claims Per Recipient By Age



Antidepressants: Avg Payment Per Recipient By Age



Year Filled: The Year in which the Claim was submitted.

Age Group: Based on the Age of the Recipient as of the time of the Claim.

Recipients: Number of Unique Members per Year per Age Group.

Paid Claims: Number of Unique Claims per Year per Age Group.

Total Payment: Total Amount Paid on the Unique Claims.

Avg Paid Claims/Recipient: The average number of Unique Claims per Unique Member. This is done by dividing the Paid Claims by the Recipients for the Year and Age Group.

Avg Payment/Recipient: The average payment of Unique Claims per Unique Member. This is done by dividing the Total Payment by the Recipients for the Year and Age Group.

Includes only Fee For Service claims.

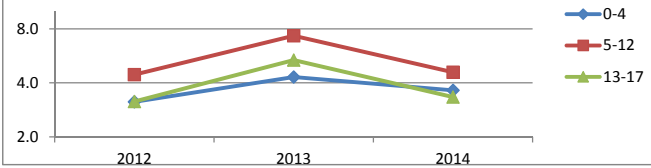


Psychotropic Trend Summary by Age (July 2012 - June 2014)

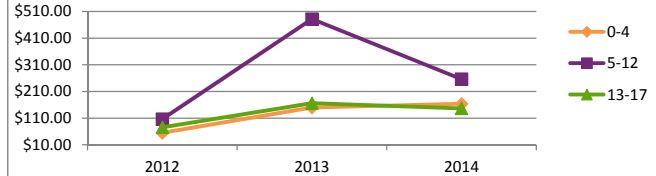
Sedatives (July 2012 - June 2014)

Year Filled	Age Group	Recipients	Paid Claims	Total Payment	Avg Paid Claims/Recipient	Avg Payment/Recipient
2012	0-4	59	185	\$ 3,234.24	3.1	\$54.82
2013	0-4	90	388	\$ 13,490.14	4.3	\$149.89
2014	0-4	47	171	\$ 7,682.66	3.6	\$163.46
2012	5-12	45	200	\$ 4,793.33	4.4	\$106.52
2013	5-12	59	432	\$ 28,413.50	7.3	\$481.58
2014	5-12	46	211	\$ 11,787.28	4.6	\$256.25
2012	13-17	66	208	\$ 4,992.27	3.2	\$75.64
2013	13-17	83	445	\$ 13,772.46	5.4	\$165.93
2014	13-17	66	220	\$ 9,667.48	3.3	\$146.48

Sedatives: Avg Claims Per Recipient By Age



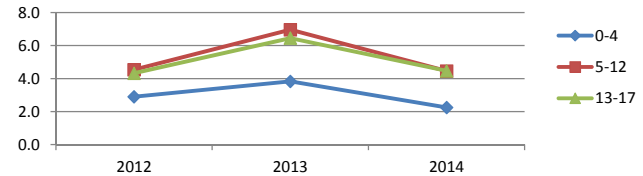
Sedatives: Avg Payment Per Recipient By Age



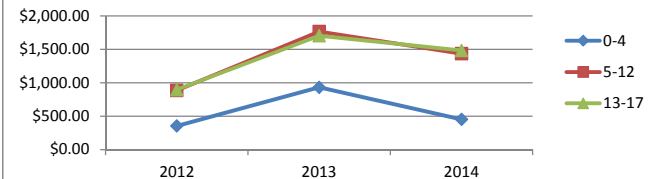
Antipsychotics (July 2012 - June 2014)

Year Filled	Age Group	Recipients	Paid Claims	Total Payment	Avg Paid Claims/Recipient	Avg Payment/Recipient
2012	0-4	10	29	\$ 3,536.37	2.9	\$353.64
2013	0-4	29	111	\$ 27,026.62	3.8	\$931.95
2014	0-4	12	27	\$ 5,434.03	2.3	\$452.84
2012	5-12	1428	6477	\$ 1,263,768.63	4.5	\$884.99
2013	5-12	1734	12066	\$ 3,063,971.01	7.0	\$1,767.00
2014	5-12	1278	5698	\$ 1,835,570.34	4.5	\$1,436.28
2012	13-17	1028	4448	\$ 922,067.96	4.3	\$896.95
2013	13-17	1454	9382	\$ 2,476,668.43	6.5	\$1,703.35
2014	13-17	1058	4731	\$ 1,569,607.24	4.5	\$1,483.56

Antipsychotics: Avg Claims Per Recipient By Age



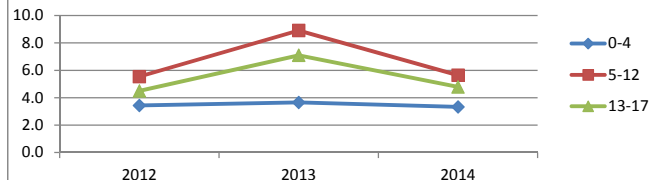
Antipsychotics: Avg Payment Per Recipient By Age



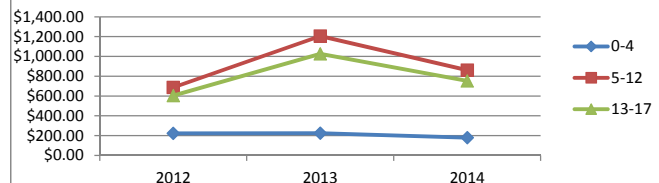
ADHD & Stimulants (July 2012 - June 2014)

Year Filled	Age Group	Recipients	Paid Claims	Total Payment	Avg Paid Claims/Recipient	Avg Payment/Recipient
2012	0-4	32	110	\$ 7,130.88	3.4	\$222.84
2013	0-4	58	212	\$ 13,050.41	3.7	\$225.01
2014	0-4	24	80	\$ 4,292.22	3.3	\$178.84
2012	5-12	2612	14459	\$ 1,791,753.14	5.5	\$685.97
2013	5-12	3322	29597	\$ 4,002,389.60	8.9	\$1,204.81
2014	5-12	2742	15478	\$ 2,362,152.11	5.6	\$861.47
2012	13-17	1246	5602	\$ 753,000.18	4.5	\$604.33
2013	13-17	1766	12528	\$ 1,810,958.39	7.1	\$1,025.46
2014	13-17	1403	6724	\$ 1,055,835.25	4.8	\$752.56

ADHD: Avg Claims Per Recipient By Age



ADHD: Avg Payment Per Recipient By Age



Year Filled: The Year in which the Claim was submitted.

Age Group: Based on the Age of the Recipient as of the time of the Claim.

Recipients: Number of Unique Members per Year per Age Group.

Paid Claims: Number of Unique Claims per Year per Age Group.

Total Payment: Total Amount Paid on the Unique Claims.

Avg Paid Claims/Recipient: The average number of Unique Claims per Unique Member. This is done by dividing the Paid Claims by the Recipients for the Year and Age Group.

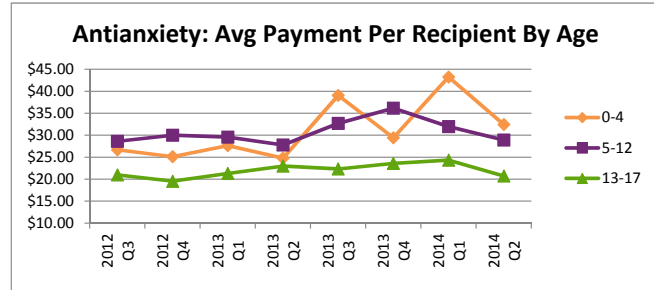
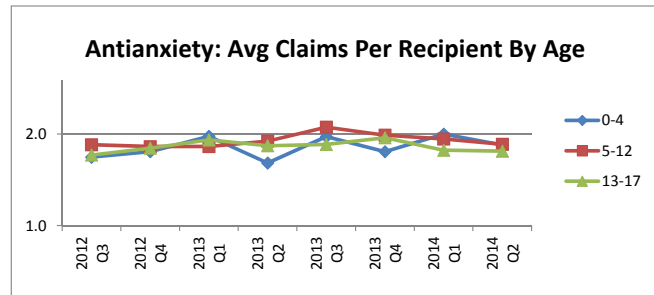
Avg Payment/Recipient: The average payment of Unique Claims per Unique Member. This is done by dividing the Total Payment by the Recipients for the Year and Age Group.

Includes only Fee For Service claims.

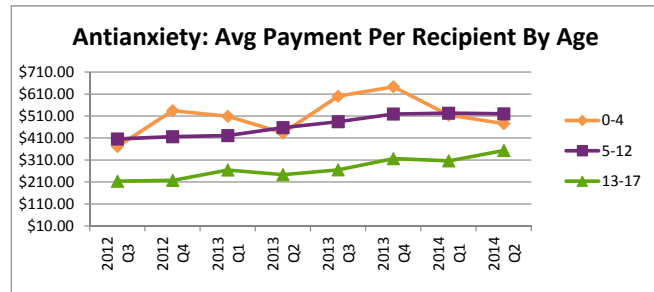
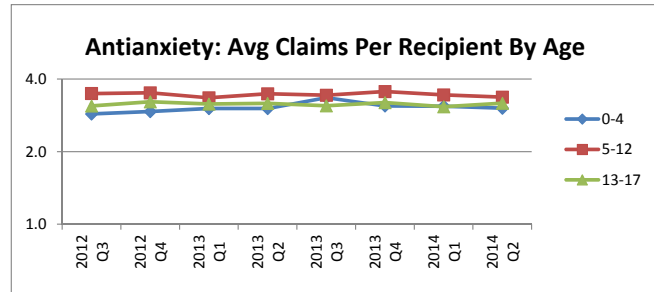


Psychotropic Trend Summary by Age (July 2012 - June 2014)

Antianxiety (July 2012 - June 2014)						
Year Filled	Age Group	Recipients	Paid Claims	Total Payment	Avg Paid Claims/Recipient	Avg Payment/Recipient
2012 Q3	0-4	28	47	\$ 747.87	1.7	\$26.71
2012 Q4	0-4	28	49	\$ 703.97	1.8	\$25.14
2013 Q1	0-4	29	57	\$ 801.41	2.0	\$27.63
2013 Q2	0-4	33	53	\$ 818.62	1.6	\$24.81
2013 Q3	0-4	25	49	\$ 976.63	2.0	\$39.07
2013 Q4	0-4	28	49	\$ 824.42	1.8	\$29.44
2014 Q1	0-4	24	48	\$ 1,038.27	2.0	\$43.26
2014 Q2	0-4	19	35	\$ 616.23	1.8	\$32.43
2012 Q3	5-12	103	190	\$ 2,947.98	1.8	\$28.62
2012 Q4	5-12	110	200	\$ 3,299.26	1.8	\$29.99
2013 Q1	5-12	94	171	\$ 2,778.99	1.8	\$29.56
2013 Q2	5-12	116	220	\$ 3,223.83	1.9	\$27.79
2013 Q3	5-12	112	236	\$ 3,664.37	2.1	\$32.72
2013 Q4	5-12	114	226	\$ 4,122.76	2.0	\$36.16
2014 Q1	5-12	121	233	\$ 3,870.92	1.9	\$31.99
2014 Q2	5-12	121	224	\$ 3,498.47	1.9	\$28.91
2012 Q3	13-17	109	186	\$ 2,287.68	1.7	\$20.99
2012 Q4	13-17	118	212	\$ 2,306.60	1.8	\$19.55
2013 Q1	13-17	115	220	\$ 2,451.00	1.9	\$21.31
2013 Q2	13-17	124	227	\$ 2,850.73	1.8	\$22.99
2013 Q3	13-17	158	292	\$ 3,528.29	1.8	\$22.33
2013 Q4	13-17	144	280	\$ 3,400.50	1.9	\$23.61
2014 Q1	13-17	139	246	\$ 3,380.98	1.8	\$24.32
2014 Q2	13-17	140	246	\$ 2,903.18	1.8	\$20.74



Anticonvulsants (July 2012 - June 2014)						
Year Filled	Age Group	Recipients	Paid Claims	Total Payment	Avg Paid Claims/Recipient	Avg Payment/Recipient
2012 Q3	0-4	96	275	\$ 35,684.07	2.9	\$371.71
2012 Q4	0-4	103	302	\$ 55,100.12	2.9	\$534.95
2013 Q1	0-4	104	314	\$ 52,936.35	3.0	\$509.00
2013 Q2	0-4	100	302	\$ 43,366.59	3.0	\$433.67
2013 Q3	0-4	92	308	\$ 55,261.77	3.3	\$600.67
2013 Q4	0-4	94	291	\$ 60,486.49	3.1	\$643.47
2014 Q1	0-4	92	284	\$ 47,382.31	3.1	\$515.03
2014 Q2	0-4	103	312	\$ 49,030.29	3.0	\$476.02
2012 Q3	5-12	555	1933	\$ 225,311.80	3.5	\$405.97
2012 Q4	5-12	560	1965	\$ 232,859.60	3.5	\$415.82
2013 Q1	5-12	566	1894	\$ 238,442.80	3.3	\$421.28
2013 Q2	5-12	586	2036	\$ 268,117.30	3.5	\$457.54
2013 Q3	5-12	578	1981	\$ 279,882.60	3.4	\$484.23
2013 Q4	5-12	600	2129	\$ 311,793.50	3.5	\$519.66
2014 Q1	5-12	628	2160	\$ 328,625.00	3.4	\$523.29
2014 Q2	5-12	636	2140	\$ 330,664.90	3.4	\$519.91
2012 Q3	13-17	535	1656	\$ 114,184.80	3.1	\$213.43
2012 Q4	13-17	551	1773	\$ 119,816.90	3.2	\$217.45
2013 Q1	13-17	556	1751	\$ 147,350.80	3.1	\$265.02
2013 Q2	13-17	598	1897	\$ 145,543.90	3.2	\$243.38
2013 Q3	13-17	595	1844	\$ 157,909.80	3.1	\$265.39
2013 Q4	13-17	570	1822	\$ 180,203.40	3.2	\$316.15
2014 Q1	13-17	597	1834	\$ 182,820.50	3.1	\$306.23
2014 Q2	13-17	597	1896	\$ 210,927.70	3.2	\$353.31



Year Filled: The Year/Quarter in which the Claim was submitted.

Age Group: Base on the Age of the Recipient as of the time of the Claim.

Recipients: Number of Unique Members per Year/Quarter per Age Group.

Paid Claims: Number of Unique Claims per Year/Quarter per Age Group.

Total Payment: Total Amount Paid on the Unique Claims.

Avg Paid Claims/Recipient: The average number of Unique Claims per Unique Member. This is done by dividing the Paid Claims by the Recipients for the Year/Quarter and Age Group.

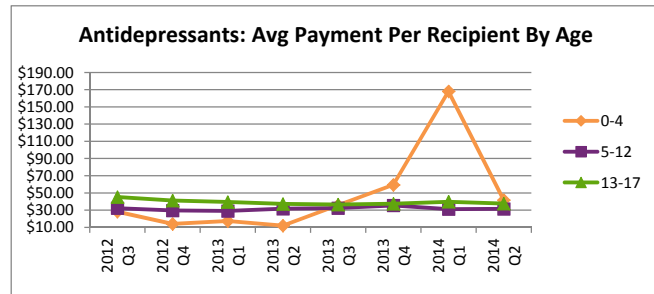
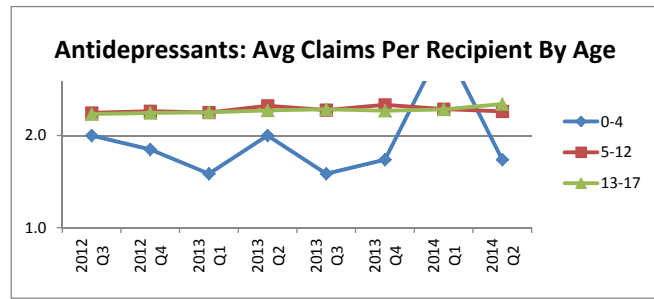
Avg Payment/Recipient: The average payment of Unique Claims per Unique Member. This is done by dividing the Total Payment by the Recipients for the Year/Quarter and Age Group.

Includes only Fee For Service claims.

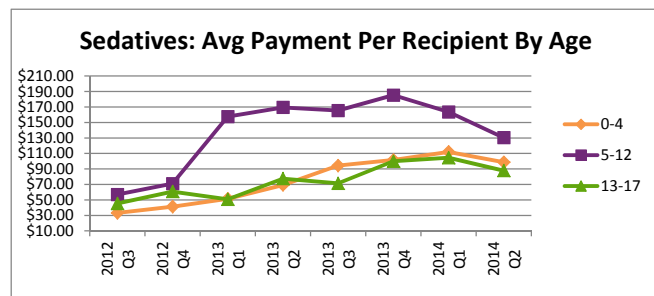
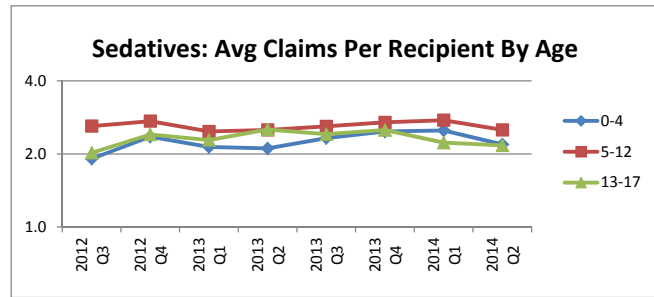


Psychotropic Trend Summary by Age (July 2012 - June 2014)

Antidepressants (July 2012 - June 2014)						
Year Filled	Age Group	Recipients	Paid Claims	Total Payment	Avg Paid Claims/ Recipient	Avg Payment/ Recipient
2012 Q3	0-4	3	6	\$ 84.69	2.0	\$28.23
2012 Q4	0-4	5	9	\$ 69.78	1.8	\$13.96
2013 Q1	0-4	4	6	\$ 69.51	1.5	\$17.38
2013 Q2	0-4	2	4	\$ 24.01	2.0	\$12.01
2013 Q3	0-4	2	3	\$ 71.57	1.5	\$35.79
2013 Q4	0-4	3	5	\$ 178.04	1.7	\$59.35
2014 Q1	0-4	1	4	\$ 168.05	4.0	\$168.05
2014 Q2	0-4	3	5	\$ 125.15	1.7	\$41.72
2012 Q3	5-12	370	877	\$ 11,954.85	2.4	\$32.31
2012 Q4	5-12	368	883	\$ 10,894.90	2.4	\$29.61
2013 Q1	5-12	380	903	\$ 11,041.06	2.4	\$29.06
2013 Q2	5-12	398	995	\$ 12,580.06	2.5	\$31.61
2013 Q3	5-12	391	946	\$ 12,656.77	2.4	\$32.37
2013 Q4	5-12	392	987	\$ 13,891.06	2.5	\$35.44
2014 Q1	5-12	422	1029	\$ 13,149.82	2.4	\$31.16
2014 Q2	5-12	426	1021	\$ 13,385.14	2.4	\$31.42
2012 Q3	13-17	592	1391	\$ 26,768.63	2.3	\$45.22
2012 Q4	13-17	602	1426	\$ 24,745.26	2.4	\$41.11
2013 Q1	13-17	640	1524	\$ 25,232.76	2.4	\$39.43
2013 Q2	13-17	676	1633	\$ 25,187.63	2.4	\$37.26
2013 Q3	13-17	676	1647	\$ 24,650.41	2.4	\$36.47
2013 Q4	13-17	708	1706	\$ 26,482.39	2.4	\$37.40
2014 Q1	13-17	714	1736	\$ 28,358.58	2.4	\$39.72
2014 Q2	13-17	732	1854	\$ 27,562.03	2.5	\$37.65



Sedatives (July 2012 - June 2014)						
Year Filled	Age Group	Recipients	Paid Claims	Total Payment	Avg Paid Claims/ Recipient	Avg Payment/ Recipient
2012 Q3	0-4	45	86	\$ 1,497.76	1.9	\$33.28
2012 Q4	0-4	42	99	\$ 1,736.48	2.4	\$41.34
2013 Q1	0-4	44	94	\$ 2,264.16	2.1	\$51.46
2013 Q2	0-4	46	97	\$ 3,184.54	2.1	\$69.23
2013 Q3	0-4	40	93	\$ 3,774.94	2.3	\$94.37
2013 Q4	0-4	42	104	\$ 4,266.50	2.5	\$101.58
2014 Q1	0-4	36	90	\$ 4,032.00	2.5	\$112.00
2014 Q2	0-4	37	81	\$ 3,650.66	2.2	\$98.67
2012 Q3	5-12	38	99	\$ 2,165.31	2.6	\$56.98
2012 Q4	5-12	37	101	\$ 2,628.02	2.7	\$71.03
2013 Q1	5-12	42	104	\$ 6,614.47	2.5	\$157.49
2013 Q2	5-12	41	103	\$ 6,947.06	2.5	\$169.44
2013 Q3	5-12	45	117	\$ 7,440.92	2.6	\$165.35
2013 Q4	5-12	40	108	\$ 7,411.05	2.7	\$185.28
2014 Q1	5-12	41	113	\$ 6,703.21	2.8	\$163.49
2014 Q2	5-12	39	98	\$ 5,084.07	2.5	\$130.36
2012 Q3	13-17	47	95	\$ 2,136.04	2.0	\$45.45
2012 Q4	13-17	47	113	\$ 2,856.23	2.4	\$60.77
2013 Q1	13-17	46	105	\$ 2,338.03	2.3	\$50.83
2013 Q2	13-17	42	106	\$ 3,255.61	2.5	\$77.51
2013 Q3	13-17	46	111	\$ 3,286.08	2.4	\$71.44
2013 Q4	13-17	49	123	\$ 4,892.74	2.5	\$99.85
2014 Q1	13-17	53	118	\$ 5,539.26	2.2	\$104.51
2014 Q2	13-17	47	102	\$ 4,128.22	2.2	\$87.83



Year Filled: The Year/Quarter in which the Claim was submitted.

Age Group: Based on the Age of the Recipient as of the time of the Claim.

Recipients: Number of Unique Members per Year/Quarter per Age Group.

Paid Claims: Number of Unique Claims per Year/Quarter per Age Group.

Total Payment: Total Amount Paid on the Unique Claims.

Avg Paid Claims/Recipient: The average number of Unique Claims per Unique Member. This is done by dividing the Paid Claims by the Recipients for the Year/Quarter and Age Group.

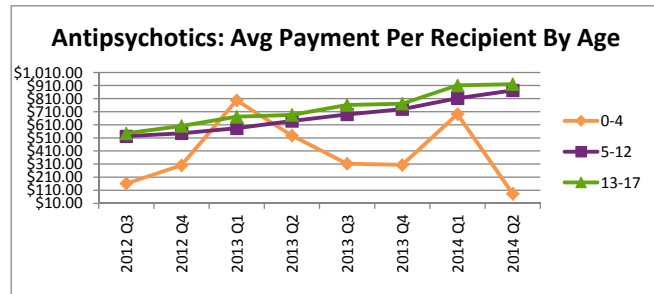
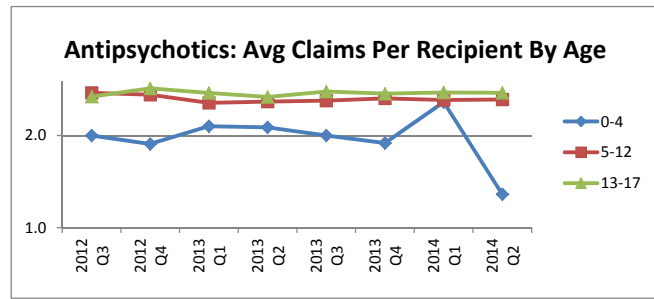
Avg Payment/Recipient: The average payment of Unique Claims per Unique Member. This is done by dividing the Total Payment by the Recipients for the Year/Quarter and Age Group.

Includes only Fee For Service claims.

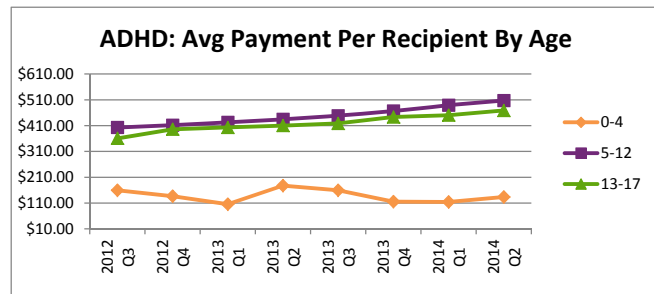
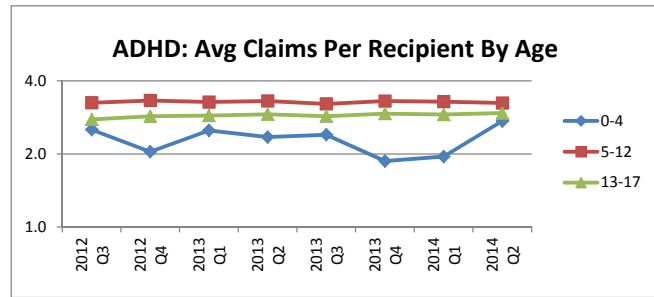


Psychotropic Trend Summary by Age (July 2012 - June 2014)

Antipsychotics (July 2012 - June 2014)						
Year Filled	Age Group	Recipients	Paid Claims	Total Payment	Avg Paid Claims/ Recipient	Avg Payment/ Recipient
2012 Q3	0-4	7	14	\$ 1,130.06	2.0	\$161.44
2012 Q4	0-4	8	15	\$ 2,406.31	1.9	\$300.79
2013 Q1	0-4	14	30	\$ 11,152.21	2.1	\$796.59
2013 Q2	0-4	16	34	\$ 8,448.28	2.1	\$528.02
2013 Q3	0-4	15	30	\$ 4,691.73	2.0	\$312.78
2013 Q4	0-4	9	17	\$ 2,734.40	1.9	\$303.82
2014 Q1	0-4	7	18	\$ 4,844.91	2.6	\$692.13
2014 Q2	0-4	7	9	\$ 589.12	1.3	\$84.16
2012 Q3	5-12	1181	3254	\$ 617,328.50	2.8	\$522.72
2012 Q4	5-12	1186	3223	\$ 646,440.10	2.7	\$545.06
2013 Q1	5-12	1220	3118	\$ 712,062.30	2.6	\$583.66
2013 Q2	5-12	1184	3055	\$ 757,468.90	2.6	\$639.75
2013 Q3	5-12	1150	2989	\$ 792,619.30	2.6	\$689.23
2013 Q4	5-12	1099	2904	\$ 801,820.60	2.6	\$729.59
2014 Q1	5-12	1100	2873	\$ 894,308.50	2.6	\$813.01
2014 Q2	5-12	1078	2825	\$ 941,261.80	2.6	\$873.16
2012 Q3	13-17	800	2143	\$ 435,594.00	2.7	\$544.49
2012 Q4	13-17	809	2305	\$ 486,474.00	2.8	\$601.33
2013 Q1	13-17	843	2321	\$ 566,234.80	2.8	\$671.69
2013 Q2	13-17	881	2354	\$ 603,954.30	2.7	\$685.53
2013 Q3	13-17	845	2352	\$ 643,149.70	2.8	\$761.12
2013 Q4	13-17	860	2355	\$ 663,329.50	2.7	\$771.31
2014 Q1	13-17	866	2394	\$ 789,215.40	2.8	\$911.33
2014 Q2	13-17	848	2337	\$ 780,391.90	2.8	\$920.27



ADHD & Stimulants (July 2012 - June 2014)						
Year Filled	Age Group	Recipients	Paid Claims	Total Payment	Avg Paid Claims/ Recipient	Avg Payment/ Recipient
2012 Q3	0-4	25	63	\$ 3,983.89	2.5	\$159.36
2012 Q4	0-4	23	47	\$ 3,146.99	2.0	\$136.83
2013 Q1	0-4	22	55	\$ 2,324.33	2.5	\$105.65
2013 Q2	0-4	23	54	\$ 4,082.98	2.3	\$177.52
2013 Q3	0-4	25	60	\$ 3,988.67	2.4	\$159.55
2013 Q4	0-4	23	43	\$ 2,654.43	1.9	\$115.41
2014 Q1	0-4	20	39	\$ 2,286.53	2.0	\$114.33
2014 Q2	0-4	15	41	\$ 2,005.69	2.7	\$133.71
2012 Q3	5-12	2147	6981	\$ 864,490.90	3.3	\$402.65
2012 Q4	5-12	2252	7478	\$ 927,262.20	3.3	\$411.75
2013 Q1	5-12	2281	7467	\$ 964,429.60	3.3	\$422.81
2013 Q2	5-12	2268	7499	\$ 984,939.60	3.3	\$434.28
2013 Q3	5-12	2200	7078	\$ 986,093.20	3.2	\$448.22
2013 Q4	5-12	2286	7553	\$ 1,066,927.00	3.3	\$466.72
2014 Q1	5-12	2364	7767	\$ 1,156,662.00	3.3	\$489.28
2014 Q2	5-12	2377	7711	\$ 1,205,490.00	3.2	\$507.15
2012 Q3	13-17	958	2660	\$ 345,525.70	2.8	\$360.67
2012 Q4	13-17	1029	2942	\$ 407,474.50	2.9	\$395.99
2013 Q1	13-17	1065	3067	\$ 429,127.60	2.9	\$402.94
2013 Q2	13-17	1087	3169	\$ 445,807.30	2.9	\$410.13
2013 Q3	13-17	1063	3043	\$ 444,861.20	2.9	\$418.50
2013 Q4	13-17	1108	3249	\$ 491,162.20	2.9	\$443.29
2014 Q1	13-17	1152	3349	\$ 519,031.50	2.9	\$450.55
2014 Q2	13-17	1145	3375	\$ 536,803.70	2.9	\$468.82



Year Filled: The Year/Quarter in which the Claim was submitted.

Age Group: Based on the Age of the Recipient as of the time of the Claim.

Recipients: Number of Unique Members per Year/Quarter per Age Group.

Paid Claims: Number of Unique Claims per Year/Quarter per Age Group.

Total Payment: Total Amount Paid on the Unique Claims.

Avg Paid Claims/Recipient: The average number of Unique Claims per Unique Member. This is done by dividing the Paid Claims by the Recipients for the Year/Quarter and Age Group.

Avg Payment/Recipient: The average payment of Unique Claims per Unique Member. This is done by dividing the Total Payment by the Recipients for the Year/Quarter and Age Group.

Includes only Fee For Service claims.