

**Utilization Dashboard - All BH Services**

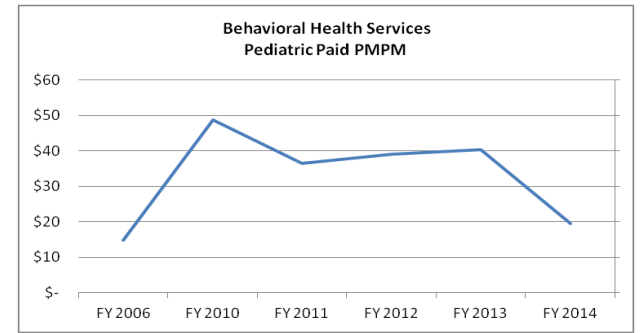
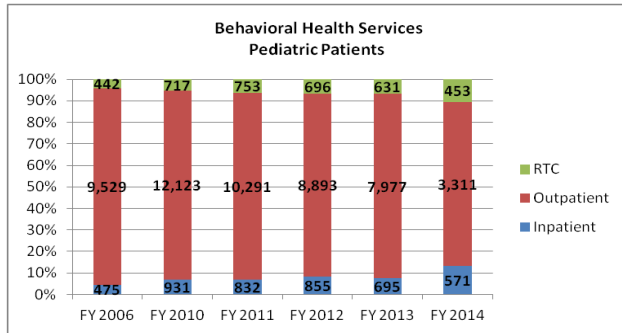
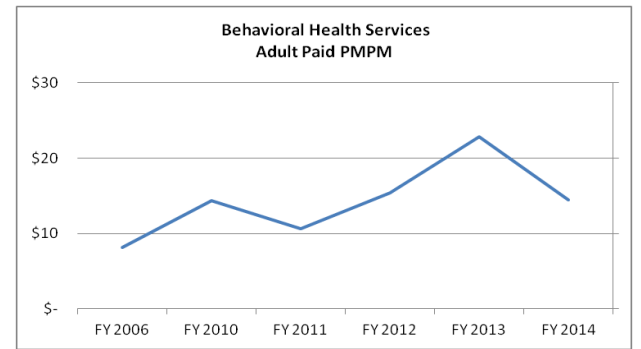
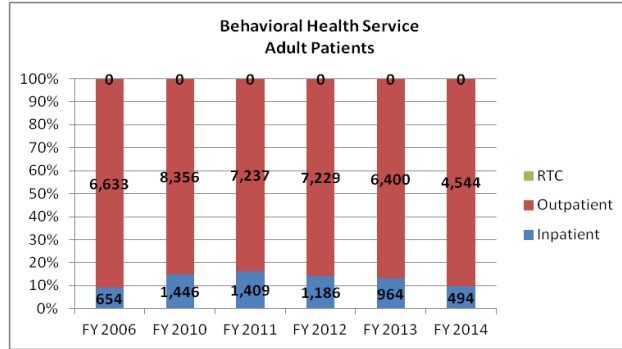
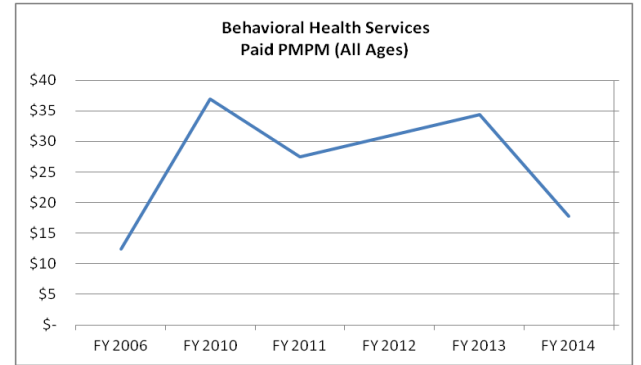
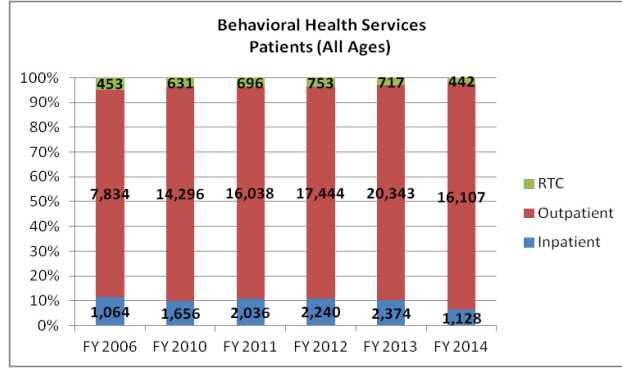
Analysis Period Ending FY 2014  
5 Months in Current FY

Behavioral Health Services (All Ages)						
All Medicaid Members	Patients	Penetration		Paid Amount	Paid PUPM	Paid PMPM
		Rate				
FY 2014	394,807	16,877	4.3%	\$84,364,879	\$417	\$18
FY 2013	446,148	21,723	4.9%	\$184,331,262	\$707	\$34
FY 2012	433,129	18,800	4.3%	\$160,989,969	\$714	\$31
FY 2011	412,074	17,170	4.2%	\$136,065,540	\$660	\$28
FY 2010	372,805	15,338	4.1%	\$165,011,000	\$897	\$37
<b>FY 2006</b>	298,279	8,605	2.9%	\$44,618,676	\$432	\$12

Adult Behavioral Health Services						
All Medicaid Members	Patients	Penetration		Paid Amount	Paid PUPM	Paid PMPM
		Rate				
FY 2014	137,845	7,072	5.1%	\$23,867,831	\$281	\$14
FY 2013	160,895	9,309	5.8%	\$44,062,876	\$394	\$23
FY 2012	154,734	8,155	5.3%	\$28,560,385	\$292	\$15
FY 2011	147,580	7,926	5.4%	\$18,792,094	\$198	\$11
FY 2010	132,119	7,032	5.3%	\$22,675,499	\$269	\$14
<b>FY 2006</b>	107,553	4,879	4.5%	\$10,556,376	\$180	\$8

Pediatric Behavioral Health Services						
All Medicaid Members	Patients	Penetration		Paid Amount	Paid PUPM	Paid PMPM
		Rate				
FY 2014	258,410	9,860	3.8%	\$60,497,049	\$511	\$20
FY 2013	288,961	12,558	4.3%	\$140,268,386	\$931	\$40
FY 2012	281,705	10,736	3.8%	\$132,429,584	\$1,028	\$39
FY 2011	267,798	9,335	3.5%	\$117,273,446	\$1,047	\$36
FY 2010	243,582	8,396	3.4%	\$142,335,502	\$1,413	\$49
<b>FY 2006</b>	192,493	3,748	1.9%	\$34,062,300	\$757	\$15

Note: There is a small amount of patients (.3% - .6%) that change age from 18 to 19 during the fiscal year and fall into both the pediatric and adult tables. The payments associated with these patients fall into the appropriate tables, but adding the patient counts from the Pediatric and Adult table will result in a slight over count as compared to the All Ages Behavioral Health table. This caveat applies through this workbook of reports.



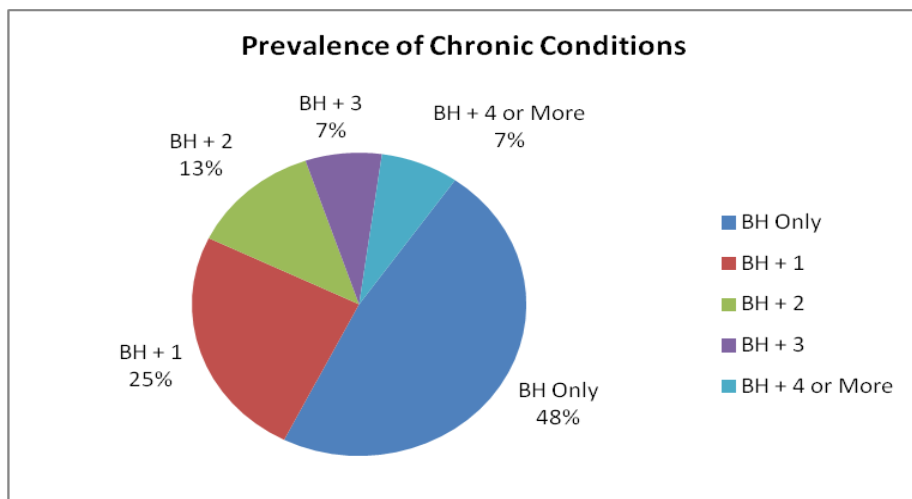
## Chronic Conditions Snapshot

Analysis Period Ending FY 2014

5 Months in Current FY

Adult Chronic Conditions FY 2014		
Chronic Diagnosis	% of BH Patients	Paid PUPM
Asthma	11.5%	\$10
Chronic Bronchitis/Emphysema	3.8%	\$5
Diabetes Mellitus	16.6%	\$33
End Stage Renal Disease	5.5%	\$25
Heart Disease	38.6%	\$97
Neoplasm	6.8%	\$10
Obesity	5.8%	\$8
HIV/AIDS	1.6%	\$4

Pediatric Chronic Conditions FY 2014		
Chronic Diagnosis	% of BH Patients	Paid PUPM
Asthma	7.1%	\$6
Diabetes Mellitus	0.6%	\$1
Neoplasm	0.8%	\$12
Obesity	1.8%	\$5
Epilepsy	1.6%	\$3



Note: Chronic conditions of behavioral health patients are identified by the presence of the following primary or secondary diagnosis on any claim during the time period of the report:

- Asthma: ICD-9-CM codes 493-493.93;
- Chronic Bronchitis/Emphysema: ICD-9-CM codes 491-492.8;
- Diabetes Mellitus: ICD-9-CM codes 250-250.93;
- End Stage Renal Disease: ICD-9-CM codes 584-586;
- Heart Disease: ICD-9-CM codes 390-459;
- Neoplasm: ICD-9-CM codes 140-239;
- Obesity: ICD-9-CM codes 278-278.8;
- HIV/AIDS: ICD-9-CM codes 042, 079.53 with diagnosis code V08.

Note: Prevalence chart looks for chronic conditions in current year and over the preceding three years.

**Foster Care Snapshot**

Analysis Period Ending FY 2014

5 Months in Current FY

		Foster Care Behavioral Health Services (All Ages)				
	All Medicaid Members	Penetration			Paid PUPM	Paid PMPM
		Patients	Rate	Paid Amount		
FY 2014	394,807	1,863	0.5%	\$11,465,391	\$513	\$2
FY 2013	446,148	2,514	0.6%	\$29,134,288	\$966	\$5
FY 2012	433,129	2,510	0.6%	\$30,595,233	\$1,016	\$6
FY 2011	412,074	2,614	0.6%	\$33,398,648	\$1,065	\$7
FY 2010	372,805	2,825	0.8%	\$50,777,944	\$1,498	\$11
<b>FY 2006</b>	298,279	1,279	0.4%	\$8,623,816	\$562	\$2

FY 2014 BH Snapshot - Foster Care						
Geographic Locale	FC BH Patients	Male	Female	Avg BH cost	Avg Number of Scripts	Avg Prescription Cost
Statewide	1,861	967	894	\$6,160	4	\$110
Clark	1,389	703	686	\$5,268	3	\$108
Washoe	320	181	139	\$6,437	5	\$120
Rural / Frontier	235	132	103	\$8,877	4	\$99
Out of State	6	3	3	\$329	1	\$13

Top 10 FY 2014 Prescriptions	
Drug Name	Scripts
Risperidone	415
Guanfacine Hydrochloride	349
Amphetamine Salt Combination	285
Aripiprazole	253
Clonidine Hydrochloride	253
Albuterol Sulfate	211
Amoxicillin	195
Methylphenidate Hydrochloride	189
Quetiapine Fumarate	177
Lisdexamfetamine Dimesylate	171

Top 10 FY 2014 ER Primary Diagnoses	
Diagnosis	% of Visits
311 Depressive Disorder NEC	27%
300 Neurotic Disorders	17%
296 Affective Psychoses	17%
305 Nondependent Drug Abuse	13%
312 Conduct Disturbance NEC	8%
298 Oth Nonorganic Psychoses	4%
314 Hyperkinetic Syndrome	4%
309 Adjustment Reaction	2%
297 Paranoid States	2%
301 Personality Disorders	2%

Top 10 FY 2014 BH Primary Diagnoses	
Diagnosis	% of Visits
309 Adjustment Reaction	38%
296 Affective Psychoses	15%
300 Neurotic Disorders	8%
312 Conduct Disturbance NEC	8%
313 Emotional Dis Child/Adol	8%
314 Hyperkinetic Syndrome	7%
995 Certain Adverse Eff NEC	6%
311 Depressive Disorder NEC	4%
V71 Observation-Suspect Cond	1%
315 Specific Develop Delays	1%

## Foster Care Snapshot

Analysis Period Ending FY 2014

5 Months in Current FY

Average Length of Stay Per Patient							
Location	Service	FY 2006	FY 2010	FY 2011	FY 2012	FY 2013	FY 2014
Statewide	Inpatient	17	16	14	11	10	8
	RTC	78	69	94	92	103	89
Clark	Inpatient	22	17	14	12	10	9
	RTC	86	49	46	30	30	45
Washoe	Inpatient	12	7	11	7	10	6
	RTC	58	30	58	41	21	25
Rural / Frontier	Inpatient	8	9	10	8	12	10
	RTC	74	84	123	110	127	92
Out of State / Invalid	Inpatient	-	-	-	-	-	-
	RTC	-	-	-	-	-	-

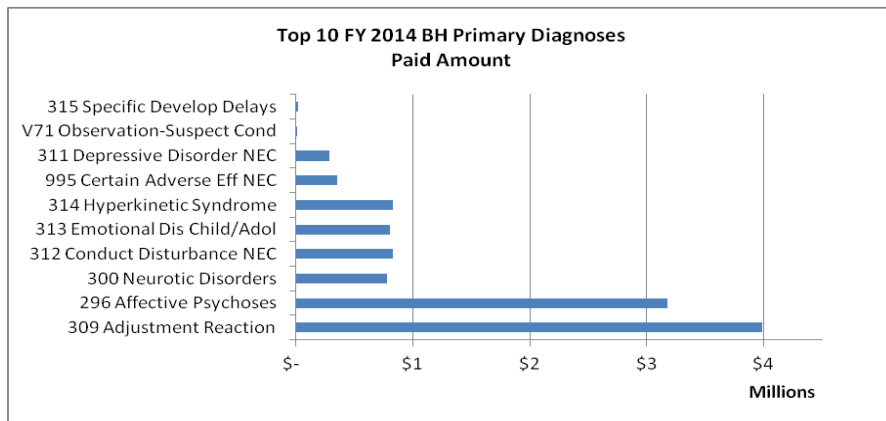
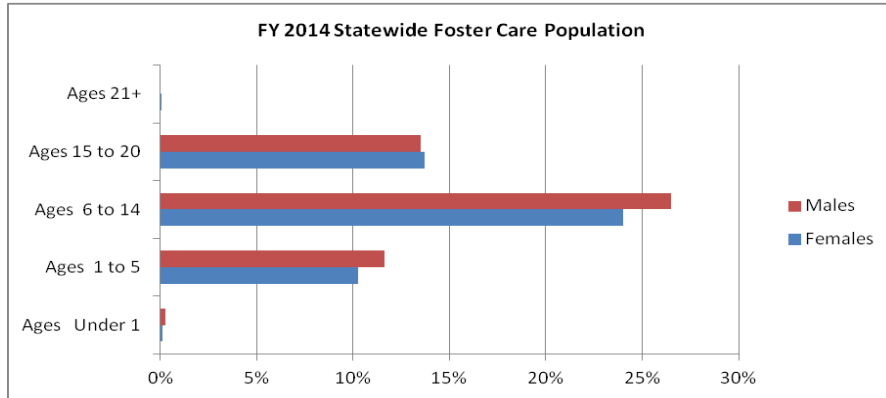
Readmission Rate								
Fiscal Year	Inpatient		RTC		RTC to Inpatient			Cumulative 60-Day
	Admissions	30-Day	Admissions	30-Day	Admissions	30-Day	31 - 60 Day	
FY 2014	78	40%	173	65%	173	0%	4%	4%
FY 2013	229	53%	318	42%	318	0%	4%	4%
FY 2012	204	53%	378	47%	378	1%	0%	1%
FY 2011	236	54%	242	34%	242	2%	3%	5%
FY 2010	220	55%	225	40%	225	6%	4%	10%
<b>FY 2006</b>	146	25%	116	26%	116	8%	5%	14%

Follow Up Rate After Discharge									
Fiscal Year	Inpatient				RTC				Cumulative 30-Day
	Patients Discharged	7 days	8 -30 days	Cumulative 30-Day	Patients Discharged	7 days	8 -30 days		
FY 2014	48	46%	21%	67%	46	11%	13%	24%	
FY 2013	116	62%	22%	84%	69	7%	26%	33%	
FY 2012	104	55%	24%	79%	93	5%	18%	24%	
FY 2011	114	61%	18%	80%	61	7%	34%	41%	
FY 2010	100	72%	19%	91%	69	10%	28%	38%	
<b>FY 2006</b>	99	28%	26%	55%	37	5%	3%	8%	

### Foster Care Snapshot

Analysis Period Ending FY 2014

5 Months in Current FY



Utilization Geo-Mapping - Inpatient and RTC
Analysis Period Ending FY 2014
5 Months in Current FY

Statewide - Year Over Year Change. Table with columns for Inpatient and RTC metrics, All BH Patients, Statewide BH Patients, Days, Admissions, and Paid Amount across various years (2009-2014).

Clark - Year Over Year Change. Table with columns for Inpatient and RTC metrics, All BH Patients, Clark BH Patients, Days, Admissions, and Paid Amount across various years (2009-2014).

Clark - Year Over Year Change (continued). Table with columns for Inpatient and RTC metrics, All BH Patients, Clark BH Patients, Days, Admissions, and Paid Amount across various years (2009-2014).

Washoe - Year Over Year Change. Table with columns for Inpatient and RTC metrics, All BH Patients, Washoe BH Patients, Days, Admissions, and Paid Amount across various years (2009-2014).

Washoe - Year Over Year Change (continued). Table with columns for Inpatient and RTC metrics, All BH Patients, Washoe BH Patients, Days, Admissions, and Paid Amount across various years (2009-2014).

Washoe - Year Over Year Change (continued). Table with columns for Inpatient and RTC metrics, All BH Patients, Washoe BH Patients, Days, Admissions, and Paid Amount across various years (2009-2014).

Rural - Year Over Year Change. Table with columns for Inpatient and RTC metrics, All BH Patients, Rural BH Patients, Days, Admissions, and Paid Amount across various years (2009-2014).

Rural - Year Over Year Change (continued). Table with columns for Inpatient and RTC metrics, All BH Patients, Rural BH Patients, Days, Admissions, and Paid Amount across various years (2009-2014).

Out of State / Inpatient. Table with columns for Inpatient and RTC metrics, All BH Patients, Out of State BH Patients, Days, Admissions, and Paid Amount across various years (2009-2014).

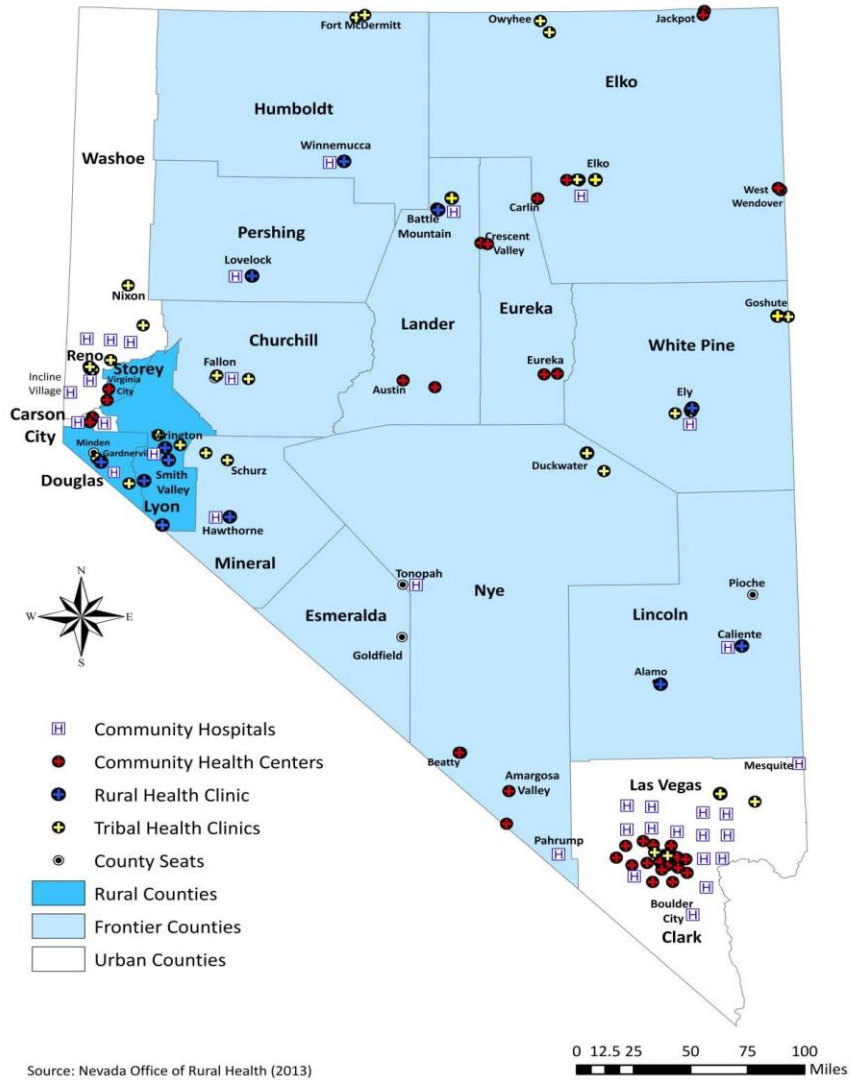
Out of State / Inpatient - Year Over Year Change. Table with columns for Inpatient and RTC metrics, All BH Patients, Out of State BH Patients, Days, Admissions, and Paid Amount across various years (2009-2014).

Utilization Geo-Mapping - Outpatient  
Analysis Period Ending FY 2014  
5 Months in Current FY

Outpatient	Patients					% of All OP Bn Medical Patients					Hours					Paid Amount					Hours / Patient					Paid Amount / Hour					Paid Amount / Patient														
	FY 2014					FY 2013					FY 2012					FY 2011					FY 2010					FY 2009					FY 2008					FY 2007					FY 2006				
	YTD	7/2013	8/2013	9/2013	10/2013	YTD	7/2013	8/2013	9/2013	10/2013	YTD	7/2013	8/2013	9/2013	10/2013	YTD	7/2013	8/2013	9/2013	10/2013	YTD	7/2013	8/2013	9/2013	10/2013	YTD	7/2013	8/2013	9/2013	10/2013	YTD	7/2013	8/2013	9/2013	10/2013	YTD	7/2013	8/2013	9/2013	10/2013					
Day Treatment	861	1,651	1,768	2,047	2,510	77%	64%	71%	73%	77%	4,463	4,642,373	630,831	639,500	650,485	38,055	53,468,118	535,664,276	511,795,833	520,700,813	515,022,939	52,676,551	4	291	305	311	384	114	1,880	1,637	1,517	1,517	1,517	56,461	10,451	56,470	57,480	55,461	53,693						
Pay-So-Reliab	328	4,831	5,391	5,781	6,077	34%	40%	43%	43%	44%	3,933	91,432	137,675	139,175	137,214	137,214	5,951,075	55,402,247	59,130,938	55,982,318	54,684,661	57,028,493	4	187	202	81	71	40	5611	530	660	556	556	52	52	52	52	52	52						
Basic Skills	654	4,121	5,131	6,131	6,781	43%	42%	42%	42%	43%	19,152	1,029,224	884,011	1,231,511	2,005,161	1,133,121	9,288,681	649,700,481	531,481,141	543,921,141	512,881,711	642,781,711	131	291	160	181	128	154	1,541	1,481	1,481	1,481	1,481	56,571	10,181	56,571	56,571	56,571	56,571						
Crisis Intev	196	230	231	239	241	14%	16%	16%	17%	17%	1,450	4,417	5,491	5,491	5,491	5,491	518,501	548,417	542,471	519,281	519,281	519,281	4	2	2	4	4	4	517,001	518	518	518	518	518	518	518	518	518							
Peer to Peer	11	11	11	11	11	1%	1%	1%	1%	1%	1	1	1	1	1	1	1	1	1	1	1	1	1	1	1	1	1	1	1	1	1	1	1	1	1	1	1								
Other Outpatient	7,111	12,461	14,771	18,151	21,601	14,43%	13,4%	13,4%	13,4%	13,4%	0	1,201	1,641	1,101	464	402	5,511	524,817	527,101	539,881	512,671	512,671	4	11	21	21	11	4	0	521	511	511	511	511	511	511	511	511							

Note: Hours are not complete for FY 2006 due to date not being available for paid service counts during that time.  
Note: A calculation was performed to translate the units for Psycho-Social Rehab, Basic Skills, Crisis Intev, and Peer to Peer services to hours as the units on the claim represent 15 minutes. Day treatment units are already in increments of 1 hour so no calculation is performed for that service.

**Map 1: Healthcare Resources in Nevada**



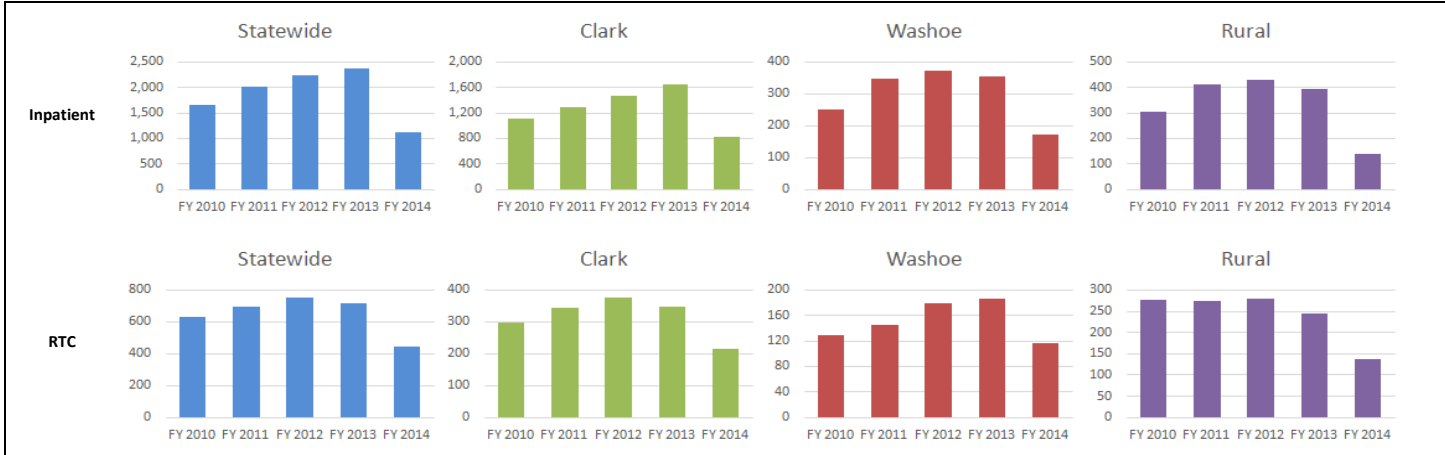


**Utilization Geo-Mapping - Inpatient and RTC**

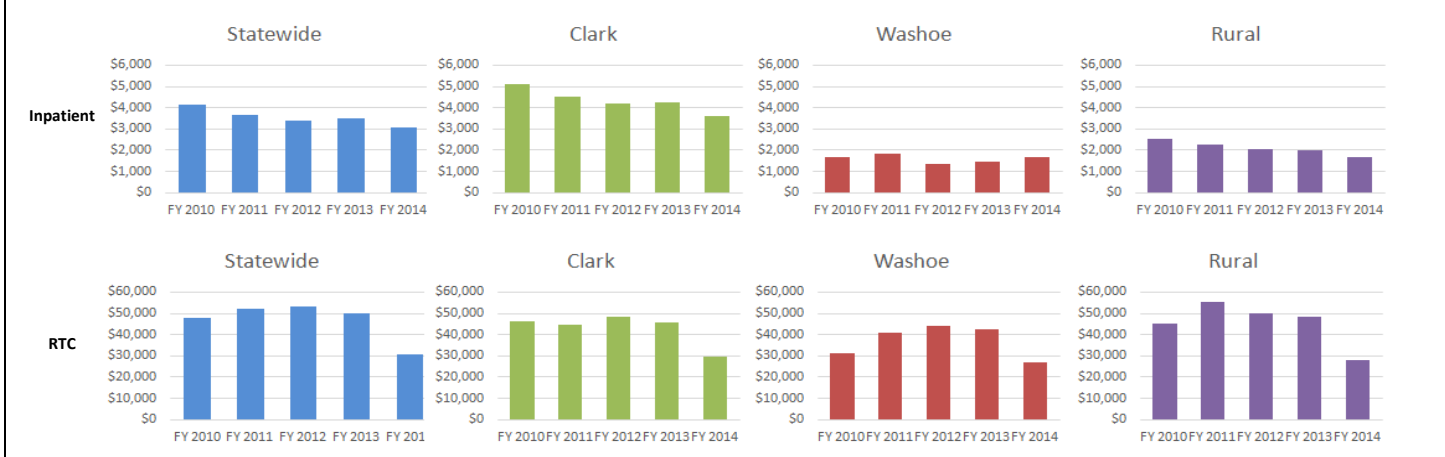
Analysis Period Ending FY 2014

5 Months in Current FY

**Patients**



**Paid Amount Per Patient**

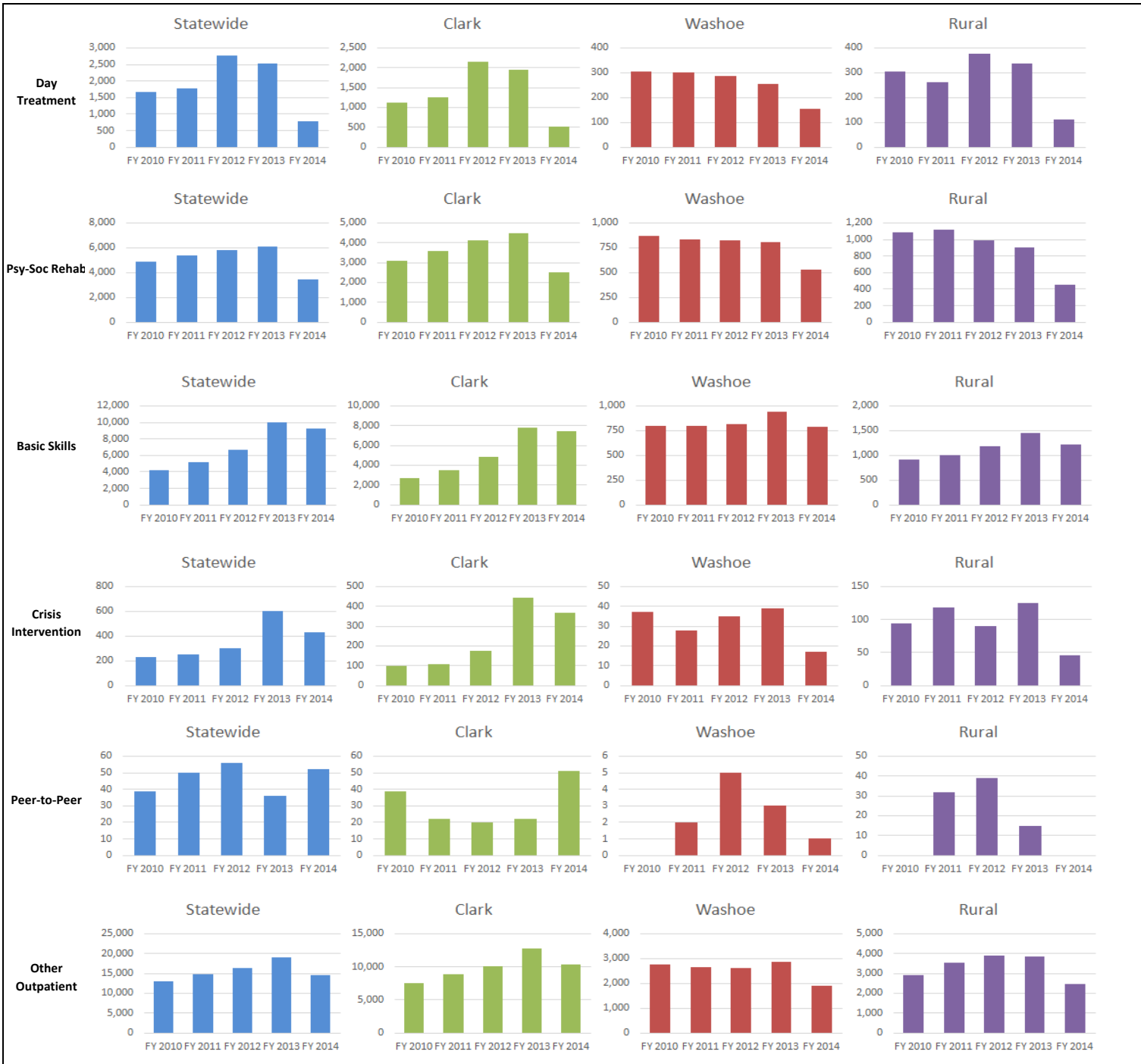


**Utilization Geo-Mapping - Inpatient and RTC**

Analysis Period Ending FY 2014

5 Months in Current FY

**Patients**

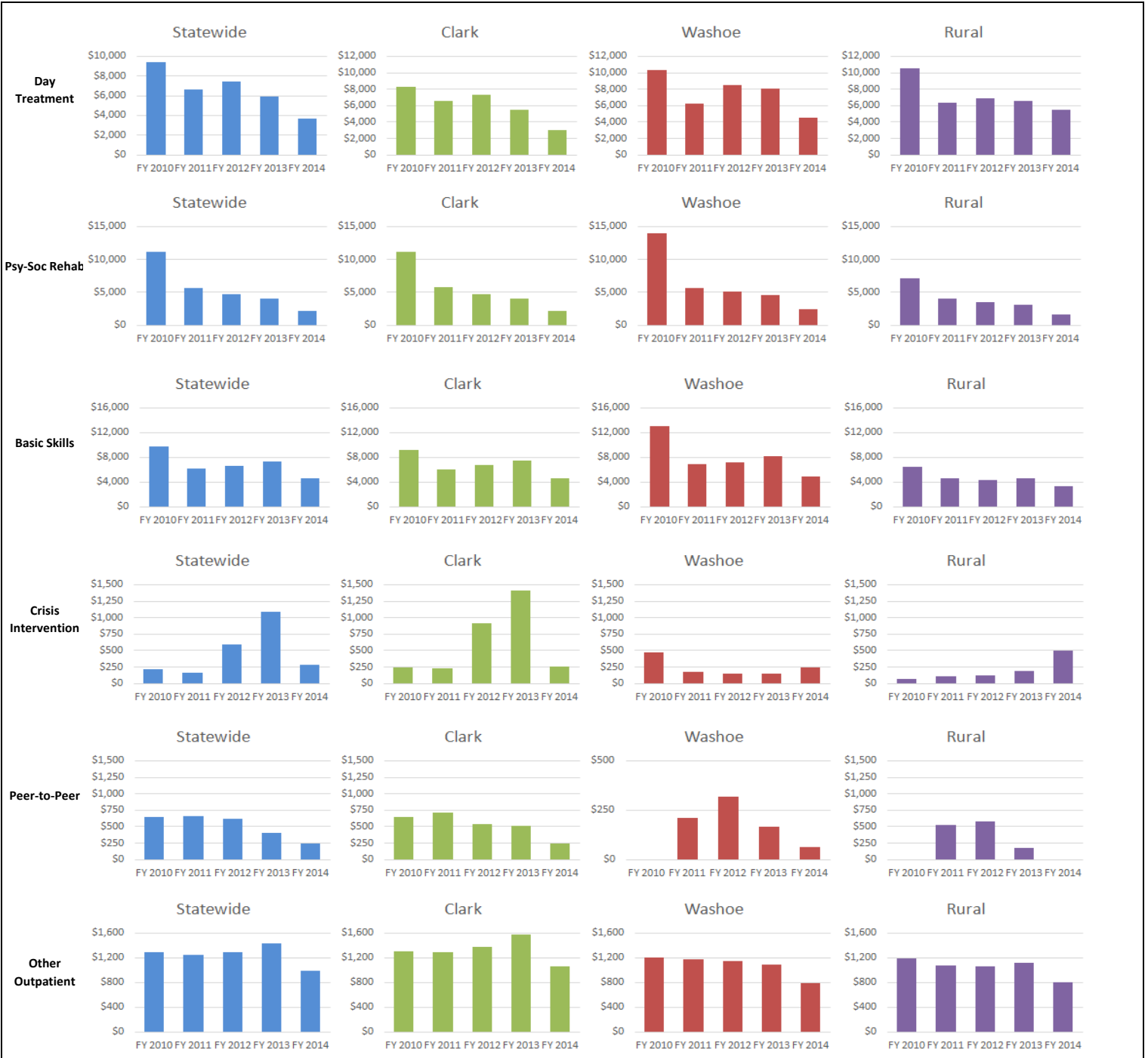


**Utilization Geo-Mapping - Inpatient and RTC**

Analysis Period Ending FY 2014

5 Months in Current FY

**Paid Amount Per Patient**



### HCBS Waivers Snapshot

Analysis Period Ending FY 2014

5 Months in Current FY

	All Medicaid Members	HCBS Waivers Behavioral Health Services (All Ages)				
		Penetration		Paid Amount	Paid PUPM	Paid PMPM
		Patients	Rate			
FY 2014	394,807	448	0.1%	\$1,109,884	\$206	\$0
FY 2013	446,148	560	0.1%	\$1,802,747	\$268	\$0
FY 2012	433,129	543	0.1%	\$1,586,033	\$243	\$0
FY 2011	412,074	539	0.1%	\$1,799,159	\$278	\$0
FY 2010	372,805	509	0.1%	\$2,540,847	\$416	\$1
<b>FY 2006</b>	298,279	404	0.1%	\$406,364	\$84	\$0

FY 2014 BH Snapshot - HCBS Waivers							
Waiver	Population	Male	Female	Avg Age	Avg BH cost	Avg Number of Scripts	Avg Prescription Cost
Assisted Living	0	0	0	0	0	0	\$30.81
Individuals with Intellectual Disabilities	341	191	150	31	\$2,369.63	17	\$96.43
Physical Disabilities	56	11	45	51	\$3,713.79	22	\$91.65
Frail Elderly	51	13	38	75	\$1,840.55	11	\$22.46

Top 10 FY 2014 Prescriptions	
Drug Name	No. of Scripts
Acetaminophen/Hydrocodone Bitartrate	7,085
Risperidone	5,383
Albuterol Sulfate	5,022
Alprazolam	3,859
Quetiapine Fumarate	3,664
Aripiprazole	3,604
Sertraline Hydrochloride	2,985
Trazodone Hydrochloride	2,985
Clonidine Hydrochloride	2,963
Gabapentin	2,862

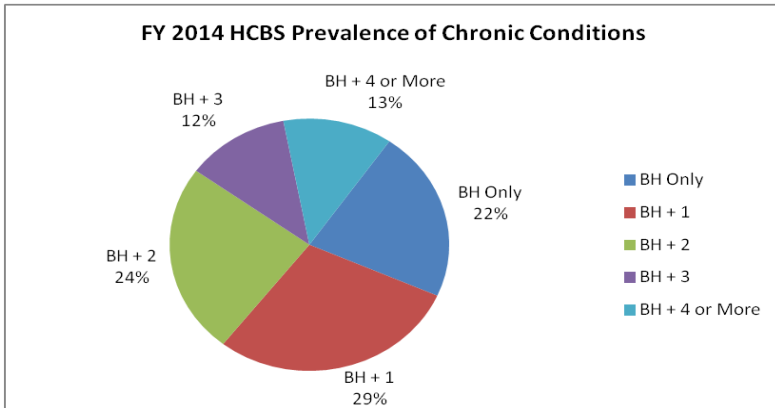
Top 10 FY 2014 ER Primary Diagnoses	
Diagnosis	% of Visits
298 Oth Nonorganic Psychoses	18%
300 Neurotic Disorders	14%
296 Affective Psychoses	13%
294 Other Organic Psych Cond	9%
311 Depressive Disorder NEC	9%
295 Schizophrenic Disorders	8%
307 Special Symptom NEC	6%
312 Conduct Disturbance NEC	6%
301 Personality Disorders	5%
309 Adjustment Reaction	3%

FY 2014 Chronic Conditions for HCBS Waiver Patients				
Chronic Diagnosis	Assisted Living	Individuals with Intellectual Disabilities	Physical Disability	Frail Elderly
Asthma	0%	6%	16%	6%
Chronic Bronchitis/Emphysema	0%	0%	9%	8%
Diabetes Mellitus	0%	9%	34%	39%
End Stage Renal Disease	0%	1%	7%	20%
Heart Disease	0%	18%	73%	96%
Neoplasm	0%	3%	9%	12%
Obesity	0%	4%	11%	6%
HIV/AIDS	0%	0%	2%	0%

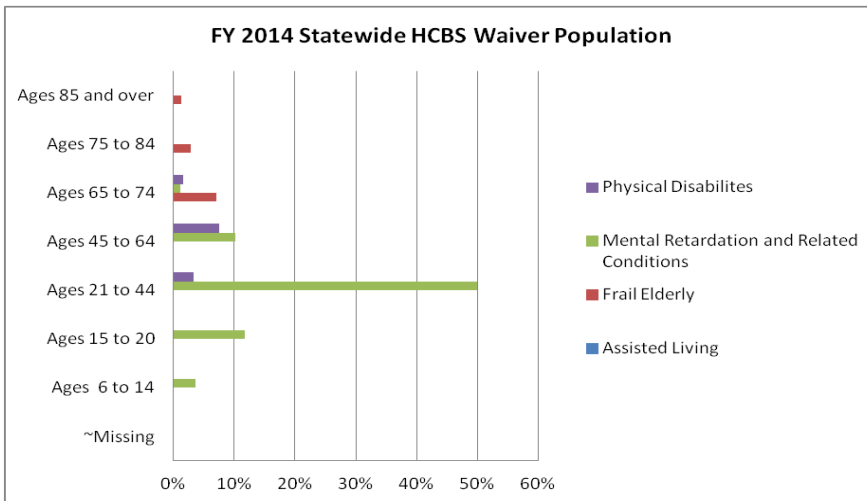
**HCBS Waivers Snapshot**

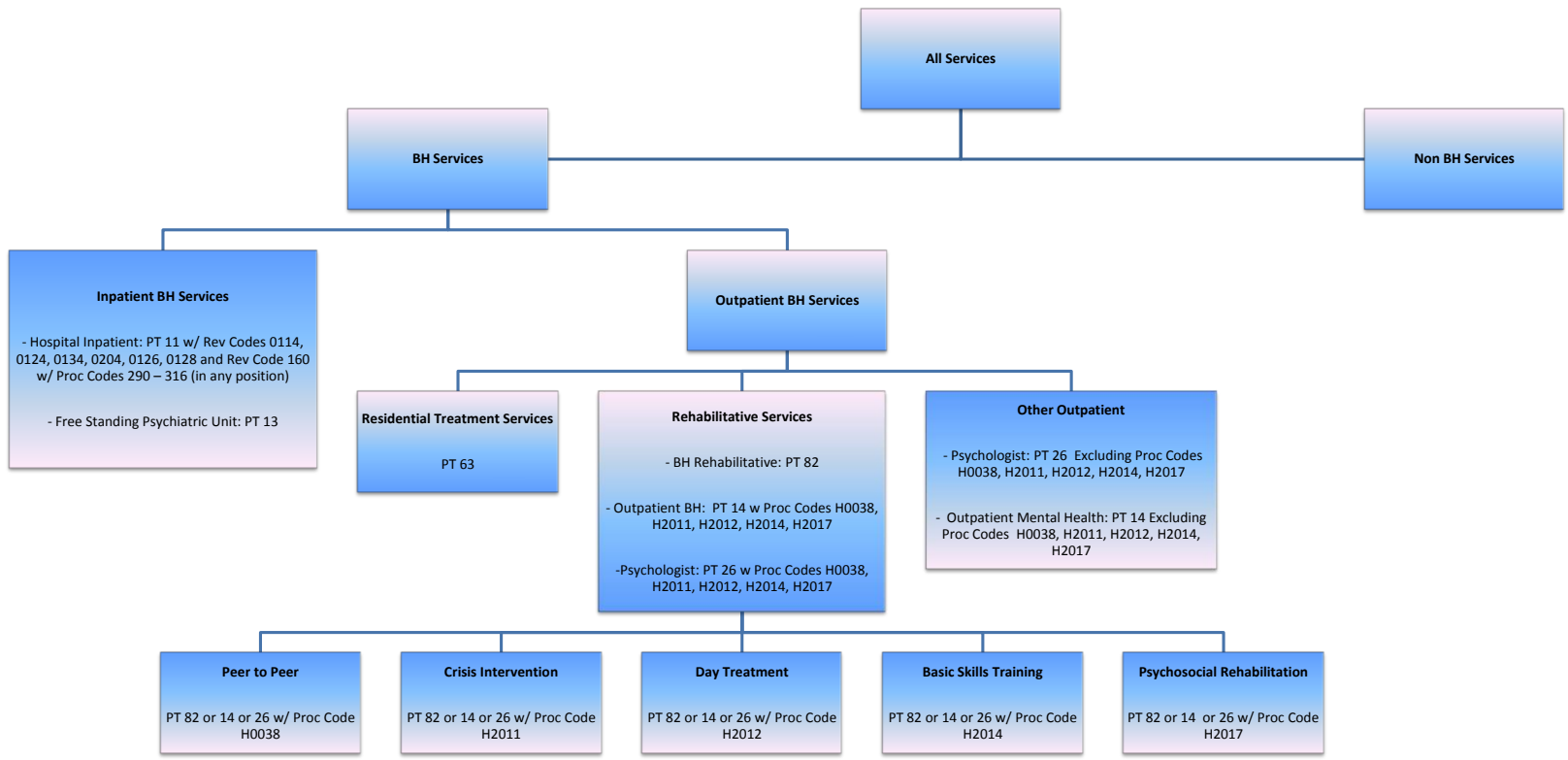
Analysis Period Ending FY 2014

5 Months in Current FY



Note: Prevalence chart looks for chronic conditions in current year and over the preceding three years.





## Utilization Dashboard - Outpatient, Inpatient

Analysis Period Ending FY 2014

5 Months in Current FY

	All Medicaid Members	Inpatient Behavioral Health Services (All Ages)					Outpatient Behavioral Health Services (All Ages)				
		Penetration		Paid Amount	Paid PUPM	Paid PMPM	Penetration		Paid Amount	Paid PUPM	Paid PMPM
		Patients	Rate				Patients	Rate			
FY 2014	394,807	1,128	0.3%	\$3,490,722	\$258	\$1	16,107	4.1%	\$67,381,170	\$349	\$14
FY 2013	446,148	2,374	0.5%	\$8,385,159	\$294	\$2	20,343	4.6%	\$140,123,021	\$574	\$26
FY 2012	433,129	2,240	0.5%	\$7,604,027	\$283	\$1	17,444	4.0%	\$113,085,285	\$540	\$22
FY 2011	412,074	2,036	0.5%	\$7,518,681	\$308	\$2	16,038	3.9%	\$92,128,387	\$479	\$19
FY 2010	372,805	1,656	0.4%	\$6,955,764	\$350	\$2	14,296	3.8%	\$127,735,023	\$745	\$29
<b>FY 2006</b>	298,279	1,064	0.4%	\$6,118,088	\$479	\$2	7,834	2.6%	\$20,926,748	\$223	\$6

	All Medicaid Members	Adult Inpatient Behavioral Health Services					Adult Outpatient Behavioral Health Services				
		Penetration		Paid Amount	Paid PUPM	Paid PMPM	Penetration		Paid Amount	Paid PUPM	Paid PMPM
		Patients	Rate				Patients	Rate			
FY 2014	137,845	654	0.5%	\$179,805	\$23	\$0	6,633	4.8%	\$23,555,430	\$296	\$14
FY 2013	160,895	1,446	0.9%	\$437,117	\$25	\$0	8,356	5.2%	\$43,217,040	\$431	\$22
FY 2012	154,734	1,409	0.9%	\$492,415	\$29	\$0	7,237	4.7%	\$27,340,087	\$315	\$15
FY 2011	147,580	1,186	0.8%	\$430,682	\$30	\$0	7,229	4.9%	\$17,947,713	\$207	\$10
FY 2010	132,119	964	0.7%	\$242,591	\$21	\$0	6,400	4.8%	\$22,042,132	\$287	\$14
<b>FY 2006</b>	107,553	494	0.5%	\$234,532	\$40	\$0	4,544	4.2%	\$10,264,436	\$188	\$8

	All Medicaid Members	Pediatric Inpatient Behavioral Health Services					Pediatric Outpatient Behavioral Health Services				
		Penetration		Paid Amount	Paid PUPM	Paid PMPM	Penetration		Paid Amount	Paid PUPM	Paid PMPM
		Patients	Rate				Patients	Rate			
FY 2014	258,410	475	0.2%	\$3,310,917	\$581	\$1	9,529	3.7%	\$43,825,740	\$383	\$14
FY 2013	288,961	931	0.3%	\$7,948,042	\$711	\$2	12,123	4.2%	\$96,905,981	\$666	\$28
FY 2012	281,705	832	0.3%	\$7,111,612	\$712	\$2	10,291	3.7%	\$85,745,198	\$694	\$25
FY 2011	267,798	855	0.3%	\$7,087,999	\$691	\$2	8,893	3.3%	\$74,180,674	\$695	\$23
FY 2010	243,582	695	0.3%	\$6,713,174	\$805	\$2	7,977	3.3%	\$105,692,891	\$1,104	\$36
<b>FY 2006</b>	192,493	571	0.3%	\$5,883,556	\$859	\$3	3,311	1.7%	\$10,662,312	\$268	\$5

### Utilization Dashboard - Other Outpatient Services by Provider Type

Analysis Period Ending FY 2014

5 Months in Current FY

		Provider Type 14 - Behavioral Health Outpatient (All Ages)					Provider Type 26 - Psychologist (All Ages)				
All Medicaid Members		Penetration		Paid Amount	Paid PUPM	Paid PMPM	Penetration		Paid Amount	Paid PUPM	Paid PMPM
		Patients	Rate				Patients	Rate			
FY 2014	394,807	13,286	3.4%	\$13,409,781	\$84	\$3	1,905	0.5%	\$985,797	\$43	\$0
FY 2013	446,148	17,400	3.9%	\$25,572,982	\$122	\$5	3,492	0.8%	\$1,905,758	\$45	\$0
FY 2012	433,129	14,351	3.3%	\$19,240,873	\$112	\$4	3,491	0.8%	\$1,866,316	\$45	\$0
FY 2011	412,074	13,072	3.2%	\$17,002,125	\$108	\$3	2,754	0.7%	\$1,429,134	\$43	\$0
FY 2010	372,805	11,140	3.0%	\$14,909,171	\$112	\$3	2,907	0.8%	\$1,715,911	\$49	\$0
<b>FY 2006</b>	298,279	5,735	1.9%	\$6,108,210	\$89	\$2	1,996	0.7%	\$1,340,914	\$56	\$0

		Provider Type 14 - Adult Behavioral Health Outpatient					Provider Type 26 - Adult Psychologist				
All Medicaid Members		Penetration		Paid Amount	Paid PUPM	Paid PMPM	Penetration		Paid Amount	Paid PUPM	Paid PMPM
		Patients	Rate				Patients	Rate			
FY 2014	137,845	5,258	3.8%	\$4,343,712	\$69	\$3	870	0.6%	\$305,128	\$29	\$0
FY 2013	160,895	6,894	4.3%	\$6,856,663	\$83	\$4	1,397	0.9%	\$584,865	\$35	\$0
FY 2012	154,734	5,792	3.7%	\$3,996,927	\$58	\$2	1,494	1.0%	\$575,059	\$32	\$0
FY 2011	147,580	5,891	4.0%	\$3,313,397	\$47	\$2	1,246	0.8%	\$427,154	\$29	\$0
FY 2010	132,119	5,016	3.8%	\$2,270,480	\$38	\$1	1,140	0.9%	\$493,009	\$36	\$0
<b>FY 2006</b>	107,553	3,713	3.5%	\$3,380,250	\$76	\$3	759	0.7%	\$238,701	\$26	\$0

		Provider Type 14 - Pediatric Behavioral Health Outpatient					Provider Type 26 - Pediatric Psychologist				
All Medicaid Members		Penetration		Paid Amount	Paid PUPM	Paid PMPM	Penetration		Paid Amount	Paid PUPM	Paid PMPM
		Patients	Rate				Patients	Rate			
FY 2014	258,410	8,060	3.1%	\$9,066,070	\$94	\$3	1,037	0.4%	\$680,669	\$55	\$0
FY 2013	288,961	10,598	3.7%	\$18,716,318	\$147	\$5	2,105	0.7%	\$1,320,892	\$52	\$0
FY 2012	281,705	8,620	3.1%	\$15,243,945	\$147	\$5	1,999	0.7%	\$1,291,256	\$54	\$0
FY 2011	267,798	7,228	2.7%	\$13,688,729	\$158	\$4	1,511	0.6%	\$1,001,979	\$55	\$0
FY 2010	243,582	6,165	2.5%	\$12,638,692	\$171	\$4	1,776	0.7%	\$1,222,902	\$57	\$0
<b>FY 2006</b>	192,493	2,036	1.1%	\$2,727,961	\$112	\$1	1,242	0.6%	\$1,102,213	\$74	\$0

Note: Includes all PT 14 and 26 procedure codes except rehabilitation codes H2012, H2017, H2014, H2011, H0038.

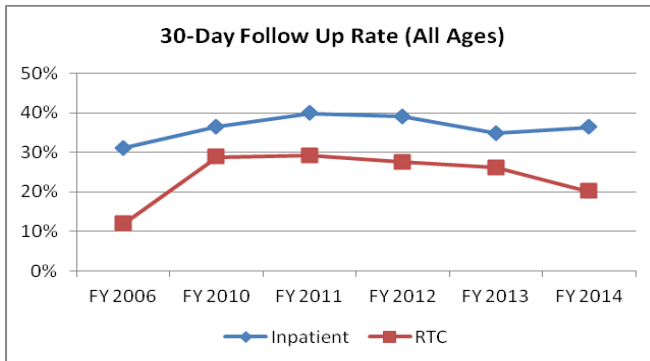
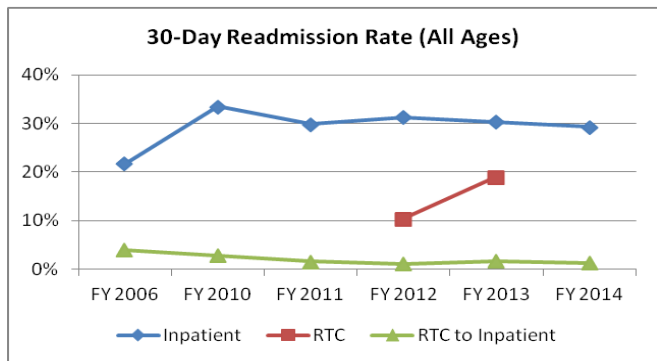


**Performance Indicators Dashboard**

Analysis Period Ending FY 2014

5 Months in Current FY

**All Ages**



	Readmission Rate (All Ages)							
	Inpatient		RTC		RTC to Inpatient			
	Admissions	30-Day	Admissions	30-Day	Admissions	30-Day	31 - 60 Day	Cumulative 60-Day
FY 2014	1,893	29%	1,632		1,632	1%	3%	5%
FY 2013	4,467	30%	4,541	19%	4,541	2%	3%	5%
FY 2012	4,107	31%	5,428	10%	5,428	1%	2%	3%
FY 2011	3,509	30%	4,380		4,380	2%	2%	3%
FY 2010	2,997	33%	3,607		3,607	3%	2%	5%
FY 2006	1,652	22%	2,141		2,141	4%	4%	8%

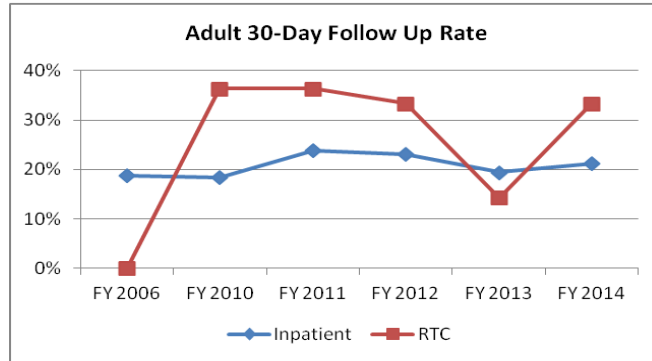
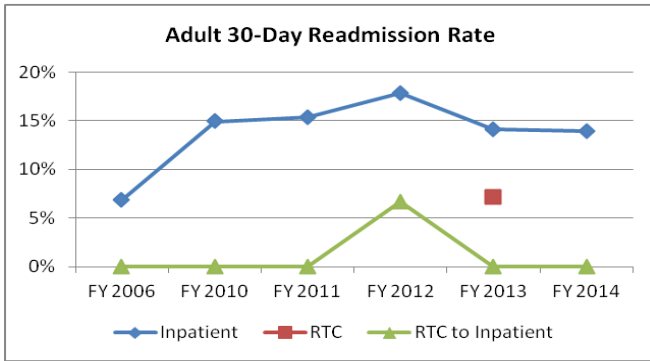
	Follow Up Rate After Discharge (All Ages)							
	Inpatient				RTC			
	Patients Discharged	7 days	8 -30 days	Cumulative 30-Day	Patients Discharged	7 days	8 -30 days	Cumulative 30-Day
FY 2014	1,128	21%	15%	36%	442	5%	15%	20%
FY 2013	2,374	18%	17%	35%	717	7%	19%	26%
FY 2012	2,240	18%	21%	39%	753	7%	21%	28%
FY 2011	2,036	19%	21%	40%	696	7%	23%	29%
FY 2010	1,656	19%	17%	36%	631	7%	22%	29%
FY 2006	1,064	16%	15%	31%	453	3%	9%	12%

BH Emergency Room Visits (All Ages)			
	Patients with BH ER Visits	BH ER Visits	BH ER Visits per 1,000 Members
FY 2014	1,842	2,731	20.25
FY 2013	3,806	6,432	20.63
FY 2012	3,696	6,186	20.47
FY 2011	3,407	5,509	19.21
FY 2010	3,000	4,746	18.79
FY 2006	1,940	2,678	13.94

**Performance Indicators Dashboard**

Analysis Period Ending FY 2014  
5 Months in Current FY

**Adult**



	Adult Readmission Rate							
	Inpatient		RTC		RTC to Inpatient			
	Admissions	30-Day	Admissions	30-Day	Admissions	30-Day	31 - 60 Day	Cumulative 60-Day
FY 2014	867	14%	12		12	0%	0%	0%
FY 2013	2,151	14%	50	7%	50	0%	14%	14%
FY 2012	2,218	18%	86		86	7%	0%	7%
FY 2011	1,785	15%	52		52	0%	0%	0%
FY 2010	1,399	15%	57		57	0%	0%	0%
FY 2006	602	7%	7		7	0%	0%	0%

	Adult Follow Up Rate After Discharge							
	Inpatient				RTC			
	Patients Discharged	7 days	8 -30 days	Cumulative 30-Day	Patients Discharged	7 days	8 -30 days	Cumulative 30-Day
FY 2014	654	10%	12%	21%	3	0%	33%	33%
FY 2013	1,446	6%	13%	19%	14	0%	14%	14%
FY 2012	1,409	5%	18%	23%	15	7%	27%	33%
FY 2011	1,186	6%	18%	24%	11	9%	27%	36%
FY 2010	964	5%	14%	18%	11	9%	27%	36%
FY 2006	494	6%	13%	19%	1	0%	0%	0%

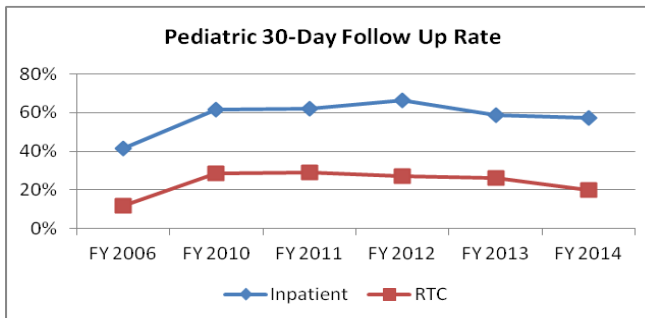
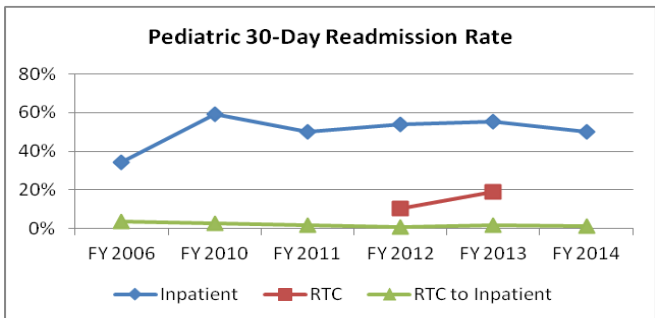
Adult BH Emergency Room Visits			
	Patients with BH ER Visits	BH ER Visits	BH ER Visits per 1,000 Members
FY 2014	1,531	2,360	59.83
FY 2013	3,119	5,548	61.20
FY 2012	3,119	5,478	63.26
FY 2011	2,895	4,876	58.27
FY 2010	2,543	4,162	55.07
FY 2006	1,597	2,244	37.22

**Performance Indicators Dashboard**

Analysis Period Ending FY 2014

5 Months in Current FY

**Pediatric**



	Pediatric Readmission Rate								
	Inpatient		RTC		RTC to Inpatient				Cumulative 60-Day
	Admissions	30-Day	Admissions	30-Day	Admissions	30-Day	31 - 60 Day		
FY 2014	1,026	50%	1,620	19%	1,620	1%	3%	3%	5%
FY 2013	2,316	55%	4,491	19%	4,491	2%	3%	3%	5%
FY 2012	1,889	54%	5,342	10%	5,342	1%	2%	2%	3%
FY 2011	1,724	50%	4,328		4,328	2%	2%	2%	3%
FY 2010	1,598	59%	3,550		3,550	3%	2%	2%	5%
FY 2006	1,050	35%	2,134		2,134	4%	4%	4%	8%

	Pediatric Follow Up Rate After Discharge							
	Inpatient				RTC			
	Patients Discharged	7 days	8 -30 days	Cumulative 30-Day	Patients Discharged	7 days	8 -30 days	Cumulative 30-Day
FY 2014	475	37%	21%	57%	439	5%	15%	20%
FY 2013	931	37%	22%	59%	706	7%	19%	26%
FY 2012	832	39%	27%	66%	744	7%	20%	27%
FY 2011	855	36%	26%	62%	691	7%	22%	29%
FY 2010	695	39%	23%	62%	624	7%	22%	29%
FY 2006	571	24%	18%	42%	453	3%	9%	12%

Pediatric BH Emergency Room Visits			
	Patients with BH ER Visits	BH ER Visits	BH ER Visits per 1,000 Members
FY 2014	314	371	3.89
FY 2013	692	884	4.00
FY 2012	580	708	3.28
FY 2011	517	633	3.12
FY 2010	463	584	3.30
FY 2006	349	434	3.29

**Performance Indicators - Geo-Mapping**

Analysis Period Ending FY 2014

5 Months in Current FY

Statewide	Readmission Rate								Top 10 ER Primary Diagnoses		
	Inpatient			RTC		RTC to Inpatient			Diagnosis	% of Visits	
	Admissions	30-Day		Admissions	30-Day	Admissions	30-Day	31 - 60 Day			Cumulative 60-Day
FY 2014	1,893	39%		1,632		1,632	1%	3%	5%	298 Oth Nonorganic Psychoses	16%
FY 2013	4,458	30%		4,541	19%	4,541	2%	3%	5%	300 Neurotic Disorders	16%
FY 2012	4,100	34%		5,428	10%	5,428	1%	2%	3%	305 Nondependent Drug Abuse	14%
FY 2011	3,485	34%		4,380		4,380	2%	2%	3%	311 Depressive Disorder NEC	12%
FY 2010	2,979	38%		3,606		3,606	3%	2%	5%	296 Affective Psychoses	11%
FY 2006	1,650	43%		2,141		2,141	4%	4%	8%	295 Schizophrenic Disorders	9%
										292 Drug Psychoses	4%
										303 Alcohol Dependence Syndr	4%
										291 Alcoholic Psychoses	2%
										312 Conduct Disturbance NEC	2%
	Follow Up Rate After Discharge										
	Inpatient				RTC						
	Patients Discharged	7 days	8 -30 days	Cumulative 30 Day	Patients Discharged	7 days	8 -30 days	Cumulative 30-Day			
FY 2014	1,128	21%	15%	36%	442	5%	15%	20%			
FY 2013	2,373	18%	17%	35%	717	7%	19%	26%			
FY 2012	2,236	18%	21%	39%	753	7%	21%	28%			
FY 2011	2,026	19%	21%	40%	696	7%	23%	29%			
FY 2010	1,649	19%	18%	37%	631	7%	22%	29%			
FY 2006	1,063	16%	15%	31%	453	3%	9%	12%			

Clark	Readmission Rate								Top 10 ER Primary Diagnoses		
	Inpatient			RTC		RTC to Inpatient			Diagnosis	% of Visits	
	Admissions	30-Day		Admissions	30-Day	Admissions	30-Day	31 - 60 Day			Cumulative 60-Day
FY 2014	1,464	34%		721		721	1%	5%	6%	298 Oth Nonorganic Psychoses	19%
FY 2013	3,371	35%		1,891	21%	1,891	2%	5%	7%	305 Nondependent Drug Abuse	14%
FY 2012	2,874	36%		2,281	10%	2,281	1%	2%	3%	300 Neurotic Disorders	14%
FY 2011	2,328	33%		1,686		1,686	2%	2%	4%	311 Depressive Disorder NEC	12%
FY 2010	2,083	37%		1,495		1,495	3%	2%	5%	296 Affective Psychoses	11%
FY 2006	930	28%		1,042		1,042	3%	5%	7%	295 Schizophrenic Disorders	10%
										292 Drug Psychoses	4%
										303 Alcohol Dependence Syndr	3%
										312 Conduct Disturbance NEC	2%
										291 Alcoholic Psychoses	1%
	Follow Up Rate After Discharge										
	Inpatient				RTC						
	Patients Discharged	7 days	8 -30 days	Cumulative 30 Day	Patients Discharged	7 days	8 -30 days	Cumulative 30-Day			
FY 2014	821	23%	14%	37%	217	4%	12%	16%			
FY 2013	1,657	21%	14%	34%	348	7%	20%	27%			
FY 2012	1,467	20%	19%	39%	376	5%	18%	23%			
FY 2011	1,295	20%	21%	41%	344	6%	20%	26%			
FY 2010	1,105	20%	16%	36%	297	5%	18%	24%			
FY 2006	550	17%	11%	28%	232	3%	6%	9%			

**Performance Indicators - Geo-Mapping**

Analysis Period Ending FY 2014

5 Months in Current FY

Washoe	Readmission Rate							
	Inpatient		RTC		RTC to Inpatient			
	Admissions	30-Day	Admissions	30-Day	Admissions	30-Day	31 - 60 Day	Cumulative 60-Day
FY 2014	229	46%	402		402	3%	1%	3%
FY 2013	498	47%	1,067	16%	1,067	1%	1%	2%
FY 2012	577	42%	1,238	11%	1,238	1%	1%	2%
FY 2011	540	35%	786		786	1%	2%	3%
FY 2010	412	40%	548		548	2%	3%	5%
FY 2006	305	47%	535		535	6%	2%	9%
	Follow Up Rate After Discharge							
	Inpatient				RTC			
	Patients Discharged	7 days	8 -30 days	Cumulative 30-Day	Patients Discharged	7 days	8 -30 days	Cumulative 30-Day
FY 2014	174	20%	22%	41%	117	5%	21%	26%
FY 2013	354	14%	25%	40%	187	9%	17%	25%
FY 2012	372	16%	28%	44%	180	8%	28%	36%
FY 2011	348	18%	21%	38%	145	6%	30%	36%
FY 2010	250	21%	18%	40%	129	9%	28%	36%
FY 2006	226	14%	20%	34%	127	2%	14%	17%

Top 10 ER Primary Diagnoses	
Diagnosis	% of Visits
300 Neurotic Disorders	20%
305 Nondependent Drug Abuse	13%
311 Depressive Disorder NEC	10%
298 Oth Nonorganic Psychoses	9%
291 Alcoholic Psychoses	8%
295 Schizophrenic Disorders	8%
296 Affective Psychoses	6%
292 Drug Psychoses	5%
303 Alcohol Dependence Syndr	5%
309 Adjustment Reaction	5%

Rural	Readmission Rate							
	Inpatient		RTC		RTC to Inpatient			
	Admissions	30-Day	Admissions	30-Day	Admissions	30-Day	31 - 60 Day	Cumulative 60-Day
FY 2014	200	21%	509		509	2%	1%	3%
FY 2013	589	23%	1,583	14%	1,583	1%	2%	3%
FY 2012	649	26%	1,909	8%	1,909	0%	2%	2%
FY 2011	617	25%	1,908		1,908	1%	1%	1%
FY 2010	484	26%	1,563		1,563	1%	4%	5%
FY 2006	415	16%	564		564	7%	-1%	6%
	Follow Up Rate After Discharge							
	Inpatient				RTC			
	Patients Discharged	7 days	8 -30 days	Cumulative 30-Day	Patients Discharged	7 days	8 -30 days	Cumulative 30-Day
FY 2014	138	12%	14%	26%	138	5%	14%	19%
FY 2013	395	10%	22%	32%	245	4%	17%	20%
FY 2012	430	15%	23%	38%	280	6%	15%	21%
FY 2011	411	14%	23%	38%	274	6%	19%	24%
FY 2010	307	14%	23%	37%	278	6%	19%	25%
FY 2006	303	15%	19%	35%	118	1%	8%	9%

Top 10 ER Primary Diagnoses	
Diagnosis	% of Visits
300 Neurotic Disorders	24%
305 Nondependent Drug Abuse	14%
296 Affective Psychoses	13%
311 Depressive Disorder NEC	9%
292 Drug Psychoses	7%
303 Alcohol Dependence Syndr	6%
295 Schizophrenic Disorders	6%
298 Oth Nonorganic Psychoses	4%
291 Alcoholic Psychoses	3%
312 Conduct Disturbance NEC	2%

Out of State / Invalid	Readmission Rate							
	Inpatient		RTC		RTC to Inpatient			
	Admissions	30-Day	Admissions	30-Day	Admissions	30-Day	31 - 60 Day	Cumulative 60-Day
FY 2014	9	100%	0		0	0%	0%	0%
FY 2013	7	33%	0	0%	0	0%	0%	0%
FY 2012	24	67%	0	0%	0	0%	0%	0%
FY 2011	18	71%	1		1	0%	0%	0%
FY 2010	2	50%	0		0	0%	0%	0%
FY 2006	0	0%	0		0	0%	0%	0%
	Follow Up Rate After Discharge							
	Inpatient				RTC			
	Patients Discharged	7 days	8 -30 days	Cumulative 30-Day	Patients Discharged	7 days	8 -30 days	Cumulative 30-Day
FY 2014	5	0%	20%	20%	0	0%	0%	0%
FY 2013	6	0%	17%	17%	0	0%	0%	0%
FY 2012	18	0%	33%	33%	0	0%	0%	0%
FY 2011	14	7%	14%	21%	1	0%	0%	0%
FY 2010	2	0%	50%	50%	0	0%	0%	0%
FY 2006	0	0%	0%	0%	0	0%	0%	0%

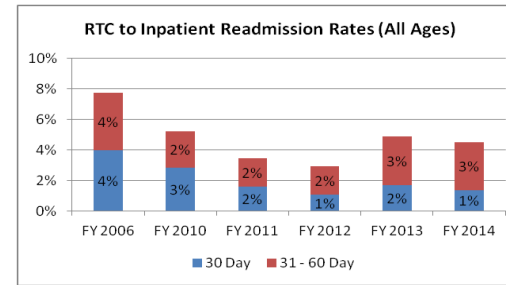
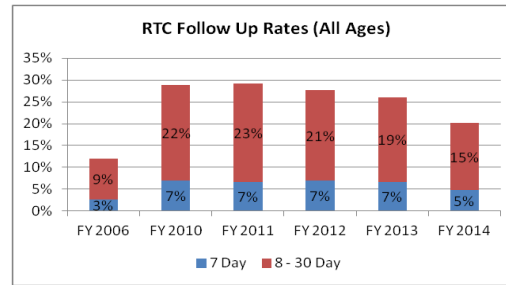
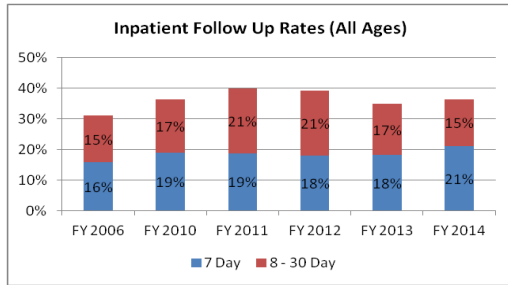
Top 10 ER Primary Diagnoses	
Diagnosis	% of Visits
300 Neurotic Disorders	26%
298 Oth Nonorganic Psychoses	15%
296 Affective Psychoses	11%
305 Nondependent Drug Abuse	11%
295 Schizophrenic Disorders	11%
292 Drug Psychoses	7%
311 Depressive Disorder NEC	7%
308 Acute Reaction to Stress	4%
309 Adjustment Reaction	4%
304 Drug Dependence	4%

**Performance Indicators Trends**

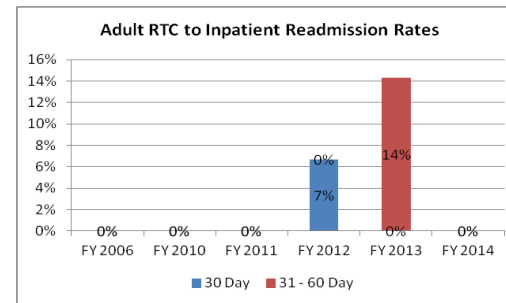
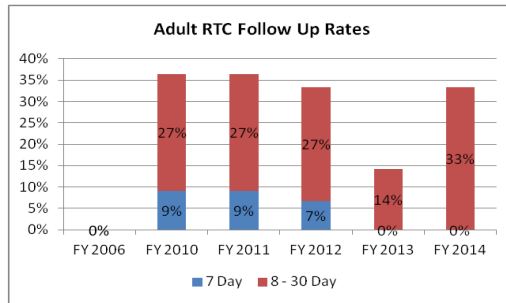
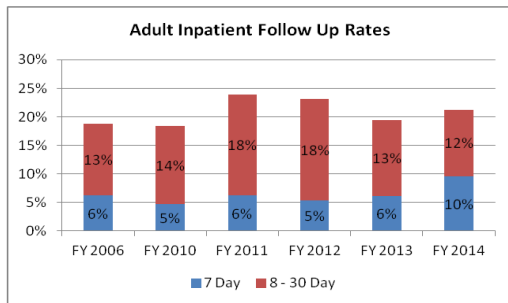
Analysis Period Ending FY 2014

5 Months in Current FY

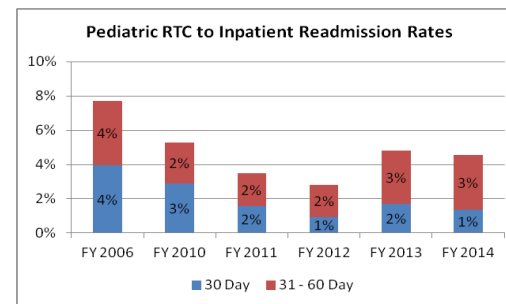
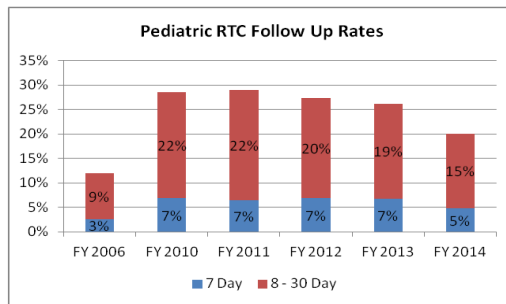
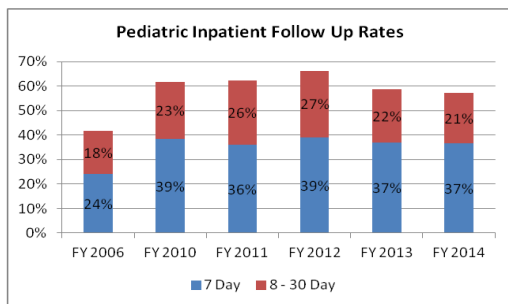
**All Ages**



**Adult**



**Pediatric**



**Utilization Dashboard - Rehabilitative Services by Provider Type**

Analysis Period Ending FY 2014

5 Months in Current FY

All Medicaid Members	Provider Type 14 - Behavioral Health Outpatient (All Ages)						Provider Type 82 - Behavioral Health Rehabilitation (All Ages)					Provider Type 26 - Psychologist (All Ages)				
	Penetration		Paid Amount	Paid PUPM	Paid PMPM		Penetration		Paid Amount	Paid PUPM	Paid PMPM	Penetration		Paid Amount	Paid PUPM	Paid PMPM
	Patients	Rate					Patients	Rate				Patients	Rate			
FY 2014	394,807	8,654	2.2%	\$41,685,108	\$401	\$9	2,237	0.6%	\$10,634,153	\$396	\$2	288	0.1%	\$666,331	\$193	\$0
FY 2013	446,148	10,168	2.3%	\$88,325,657	\$724	\$16	2,753	0.6%	\$22,568,001	\$683	\$4	258	0.1%	\$1,750,623	\$565	\$0
FY 2012	433,129	7,365	1.7%	\$63,674,678	\$720	\$12	3,777	0.9%	\$26,659,652	\$588	\$5	143	0.0%	\$1,643,766	\$958	\$0
FY 2011	412,074	4,065	1.0%	\$33,106,419	\$679	\$7	4,156	1.0%	\$39,509,912	\$792	\$8	100	0.0%	\$1,080,797	\$901	\$0
FY 2010	372,805	3,596	1.0%	\$49,878,236	\$1,156	\$11	3,422	0.9%	\$60,648,519	\$1,477	\$14	36	0.0%	\$583,185	\$1,350	\$0
<b>FY 2006</b>	298,279	1,138	0.4%	\$7,436,954	\$545	\$2	1,399	0.5%	\$6,040,670	\$360	\$2	0	0.0%	\$0	\$0	\$0

All Medicaid Members	Provider Type 14 - Adult Behavioral Health Outpatient						Provider Type 82 - Adult Behavioral Health Rehabilitation					Provider Type 26 - Adult Psychologist				
	Penetration		Paid Amount	Paid PUPM	Paid PMPM		Penetration		Paid Amount	Paid PUPM	Paid PMPM	Penetration		Paid Amount	Paid PUPM	Paid PMPM
	Patients	Rate					Patients	Rate				Patients	Rate			
FY 2014	137,845	2,838	2.1%	\$13,038,372	\$383	\$8	1,075	0.8%	\$5,834,487	\$452	\$4	193	0.1%	\$33,732	\$15	\$0
FY 2013	160,895	3,034	1.9%	\$22,913,661	\$629	\$12	1,316	0.8%	\$12,849,468	\$814	\$7	94	0.1%	\$12,382	\$11	\$0
FY 2012	154,734	1,834	1.2%	\$13,277,368	\$603	\$7	1,070	0.7%	\$9,481,541	\$738	\$5	25	0.0%	\$9,191	\$31	\$0
FY 2011	147,580	1,180	0.8%	\$7,403,369	\$523	\$4	939	0.6%	\$6,803,056	\$604	\$4	13	0.0%	\$738	\$5	\$0
FY 2010	132,119	1,026	0.8%	\$10,588,845	\$860	\$7	614	0.5%	\$8,689,711	\$1,179	\$5	1	0.0%	\$87	\$7	\$0
<b>FY 2006</b>	107,553	802	0.7%	\$5,389,448	\$560	\$4	524	0.5%	\$1,256,037	\$200	\$1	0	0.0%	\$0	\$0	\$0

All Medicaid Members	Provider Type 14 - Pediatric Behavioral Health Outpatient						Provider Type 82 - Pediatric Behavioral Health Rehabilitation					Provider Type 26 - Pediatric Psychologist				
	Penetration		Paid Amount	Paid PUPM	Paid PMPM		Penetration		Paid Amount	Paid PUPM	Paid PMPM	Penetration		Paid Amount	Paid PUPM	Paid PMPM
	Patients	Rate					Patients	Rate				Patients	Rate			
FY 2014	258,410	5,849	2.3%	\$28,646,737	\$408	\$9	1,174	0.5%	\$4,799,666	\$341	\$0	95	0.0%	\$632,599	\$555	\$0
FY 2013	288,961	7,212	2.5%	\$65,411,997	\$756	\$19	1,465	0.5%	\$9,718,533	\$553	\$0	164	0.1%	\$1,738,241	\$883	\$0
FY 2012	281,705	5,576	2.0%	\$50,397,310	\$753	\$15	2,725	1.0%	\$17,178,111	\$525	\$0	118	0.0%	\$1,634,575	\$1,154	\$0
FY 2011	267,798	2,905	1.1%	\$25,703,050	\$737	\$8	3,262	1.2%	\$32,706,856	\$836	\$0	87	0.0%	\$1,080,059	\$1,035	\$0
FY 2010	243,582	2,594	1.1%	\$39,289,390	\$1,262	\$13	2,839	1.2%	\$51,958,808	\$1,525	\$0	35	0.0%	\$583,098	\$1,388	\$0
<b>FY 2006</b>	192,493	338	0.2%	\$2,047,506	\$505	\$1	877	0.5%	\$4,784,633	\$455	\$0	0	0.0%	\$0	\$0	\$0

Note: PT 14 and 26 rehabilitative services include procedure codes H2012, H2017, H2014, H2011, and H0038 only.

**Utilization Dashboard - Residential Treatment Center (RTC)**

Analysis Period Ending FY 2014

5 Months in Current FY

RTC Services (All Ages)						
	All Medicaid Members	Penetration		Paid Amount	Paid PUPM	Paid PMPM
		Patients	Rate			
FY 2014	271,693	442	0.2%	\$13,492,987	\$2,544	\$4
FY 2013	305,729	717	0.2%	\$35,823,082	\$4,164	\$10
FY 2012	298,508	753	0.3%	\$40,300,657	\$4,460	\$11
FY 2011	284,502	696	0.2%	\$36,418,472	\$4,360	\$11
FY 2010	258,955	631	0.2%	\$30,320,213	\$4,004	\$10
<b>FY 2006</b>	204,999	453	0.2%	\$17,573,839	\$3,233	\$7

**By Federal Age Cohort**

	All Medicaid Members	RTC Services - Ages 1 - 5					RTC Services - Ages 6 - 14					RTC Services - Ages 15 - 20					RTC Services - Ages 21 - 22				
		Patients	Rate	Paid Amount	Paid PUPM	Paid PMPM	Patients	Rate	Paid Amount	Paid PUPM	Paid PMPM	Patients	Rate	Paid Amount	Paid PUPM	Paid PMPM	Patients	Rate	Paid Amount	Paid PUPM	Paid PMPM
FY 2014	271,693	1	0.0%	\$5,780	\$482	\$0	203	0.1%	\$6,046,830	\$2,482	\$2	249	0.1%	\$7,440,377	\$2,490	\$2	0	0.0%	\$0	\$0	\$0
FY 2013	305,729	2	0.0%	\$45,560	\$0	\$0	331	0.1%	\$16,698,493	\$4,204	\$5	434	0.1%	\$19,068,828	\$3,661	\$5	1	0.0%	\$10,200	\$850	\$0
FY 2012	298,508	0	0.0%	\$0	\$0	\$0	312	0.1%	\$15,175,204	\$4,053	\$4	489	0.2%	\$25,125,453	\$4,282	\$7	1	0.0%	\$6,240	\$520	\$0
FY 2011	284,502	1	0.0%	\$19,720	\$0	\$0	281	0.1%	\$14,190,959	\$4,208	\$4	453	0.2%	\$22,201,553	\$4,084	\$7	0	0.0%	\$0	\$0	\$0
FY 2010	258,955	0	0.0%	\$0	\$0	\$0	222	0.1%	\$10,741,058	\$4,032	\$3	444	0.2%	\$19,579,154	\$3,675	\$6	0	0.0%	\$0	\$0	\$0
<b>FY 2006</b>	204,999	0	0.0%	\$0	\$0	\$0	209	0.1%	\$8,384,551	\$3,343	\$3	270	0.1%	\$9,189,289	\$2,836	\$4	0	0.0%	\$0	\$0	\$0

Note: All Medicaid Patients include Patients between the ages of 0 and 22.



**Utilization Dashboard -  
Specific Rehabilitative Services**

Analysis Period Ending FY 2014

5 Months in Current FY

All Medicaid Members		Provider Type 14 - Peer to Peer Services (H0038)					Provider Type 14 - Crisis Intervention Services (H2011)				
		Penetration		Paid Amount	Paid PUPM	Paid PMPM	Penetration		Paid Amount	Paid PUPM	Paid PMPM
	Patients	Rate	Patients				Rate	Patients			
FY 2014	394,807	35	0.0%	\$6,793	\$16	\$0	221	0.1%	\$93,792	\$35	\$0
FY 2013	446,148	26	0.0%	\$7,078	\$23	\$0	481	0.1%	\$643,817	\$112	\$0
FY 2012	433,129	42	0.0%	\$25,452	\$51	\$0	260	0.1%	\$87,777	\$28	\$0
FY 2011	412,074	35	0.0%	\$18,754	\$45	\$0	237	0.1%	\$40,744	\$14	\$0
FY 2010	372,805	26	0.0%	\$16,792	\$54	\$0	211	0.1%	\$45,654	\$18	\$0
<b>FY 2006</b>	298,279	13	0.0%	\$153	\$1	\$0	195	0.1%	\$17,892	\$8	\$0

All Medicaid Members		Provider Type 82 - Peer to Peer Services (H0038)					Provider Type 82 - Crisis Intervention Services (H2011)				
		Penetration		Paid Amount	Paid PUPM	Paid PMPM	Penetration		Paid Amount	Paid PUPM	Paid PMPM
	Patients	Rate	Patients				Rate	Patients			
FY 2014	258,410	25	0.0%	\$5,878	\$20	\$0	1	0.0%	\$130	\$11	\$0
FY 2013	288,961	11	0.0%	\$7,502	\$57	\$0	3	0.0%	\$1,476	\$41	\$0
FY 2012	281,705	15	0.0%	\$9,417	\$52	\$0	35	0.0%	\$87,448	\$208	\$0
FY 2011	267,798	15	0.0%	\$14,184	\$79	\$0	6	0.0%	\$746	\$10	\$0
FY 2010	243,582	19	0.0%	\$8,640	\$38	\$0	17	0.0%	\$2,563	\$13	\$0
<b>FY 2006</b>	192,493	0	0.0%	\$0	\$0	\$0	1	0.0%	\$610	\$51	\$0

All Medicaid Members		Provider Type 26 - Peer to Peer Services (H0038)					Provider Type 26 - Crisis Intervention Services (H2011)				
		Penetration		Paid Amount	Paid PUPM	Paid PMPM	Penetration		Paid Amount	Paid PUPM	Paid PMPM
	Patients	Rate	Patients				Rate	Patients			
FY 2014	137,845	0	0.0%	\$0	\$0	\$0	210	0.2%	\$25,671	\$10	\$0
FY 2013	160,895	0	0.0%	\$0	\$0	\$0	130	0.1%	\$10,066	\$6	\$0
FY 2012	154,734	0	0.0%	\$0	\$0	\$0	14	0.0%	\$1,054	\$6	\$0
FY 2011	147,580	0	0.0%	\$0	\$0	\$0	10	0.0%	\$986	\$8	\$0
FY 2010	132,119	0	0.0%	\$0	\$0	\$0	3	0.0%	\$195	\$5	\$0
<b>FY 2006</b>	107,553	0	0.0%	\$0	\$0	\$0	0	0.0%	\$0	\$0	\$0

**Utilization Dashboard -  
Specific Rehabilitative Services**

Analysis Period Ending FY 2014

5 Months in Current FY

		Provider Type 14 - Day Treatment Services (H2012)					Provider Type 14 - Basic Skills Training Services (H2014)				
All Medicaid Members		Penetration		Paid Amount	Paid PUPM	Paid PMPM	Penetration		Paid Amount	Paid PUPM	Paid PMPM
		Patients	Rate				Patients	Rate			
FY 2014	394,807	700	0.2%	\$2,372,479	\$282	\$1	7,937	2.0%	\$32,638,660	\$343	\$7
FY 2013	446,148	2,330	0.5%	\$12,562,463	\$449	\$2	8,750	2.0%	\$54,026,039	\$515	\$10
FY 2012	433,129	2,444	0.6%	\$16,523,336	\$563	\$3	5,280	1.2%	\$26,965,528	\$426	\$5
FY 2011	412,074	1,045	0.3%	\$6,805,169	\$543	\$1	2,322	0.6%	\$12,149,145	\$436	\$2
FY 2010	372,805	893	0.2%	\$6,829,369	\$637	\$2	2,155	0.6%	\$18,849,477	\$729	\$4
<b>FY 2006</b>	298,279	264	0.1%	\$1,878,086	\$593	\$1	648	0.2%	\$5,120,863	\$659	\$1

		Provider Type 82 - Day Treatment Services (H2012)					Provider Type 82 - Basic Skills Training Services (H2014)				
All Medicaid Members		Penetration		Paid Amount	Paid PUPM	Paid PMPM	Penetration		Paid Amount	Paid PUPM	Paid PMPM
		Patients	Rate				Patients	Rate			
FY 2014	258,410	48	0.0%	\$73,981	\$128	\$0	2,031	0.8%	\$9,469,910	\$389	\$3
FY 2013	288,961	277	0.1%	\$1,224,590	\$368	\$0	2,377	0.8%	\$17,967,633	\$630	\$5
FY 2012	281,705	689	0.2%	\$2,944,264	\$356	\$1	2,990	1.1%	\$16,744,290	\$467	\$5
FY 2011	267,798	772	0.3%	\$4,262,957	\$460	\$1	3,144	1.2%	\$19,172,781	\$508	\$6
FY 2010	243,582	861	0.4%	\$8,473,632	\$820	\$3	2,308	0.9%	\$21,771,519	\$786	\$7
<b>FY 2006</b>	192,493	261	0.1%	\$1,610,432	\$514	\$1	330	0.2%	\$1,168,007	\$295	\$1

		Provider Type 26 - Day Treatment Services (H2012)					Provider Type 26 - Basic Skills Training Services (H2014)				
All Medicaid Members		Penetration		Paid Amount	Paid PUPM	Paid PMPM	Penetration		Paid Amount	Paid PUPM	Paid PMPM
		Patients	Rate				Patients	Rate			
FY 2014	137,845	51	0.0%	\$430,094	\$703	\$0	75	0.1%	\$201,435	\$224	\$0
FY 2013	160,895	79	0.0%	\$1,225,540	\$1,293	\$1	105	0.1%	\$405,758	\$322	\$0
FY 2012	154,734	67	0.0%	\$1,238,001	\$1,540	\$1	94	0.1%	\$246,384	\$218	\$0
FY 2011	147,580	50	0.0%	\$723,708	\$1,206	\$0	63	0.0%	\$166,692	\$220	\$0
FY 2010	132,119	28	0.0%	\$361,275	\$1,075	\$0	26	0.0%	\$89,545	\$287	\$0
<b>FY 2006</b>	107,553	0	0.0%	\$0	\$0	\$0	0	0.0%	\$0	\$0	\$0

**Utilization Dashboard -  
Specific Rehabilitative Services**

Analysis Period Ending FY 2014

5 Months in Current FY

		<b>Provider Type 14 - Psychosocial Rehabilitative Services (H2017)</b>				
		Penetration				
	All Medicaid Members	Patients	Rate	Paid Amount	Paid PUPM	Paid PMPM
FY 2014	394,807	3,110	0.8%	\$6,573,385	\$176	\$17
FY 2013	446,148	5,492	1.2%	\$21,086,261	\$320	\$47
FY 2012	433,129	4,869	1.1%	\$20,072,585	\$344	\$46
FY 2011	412,074	2,782	0.7%	\$14,092,607	\$422	\$34
FY 2010	372,805	2,557	0.7%	\$24,136,944	\$787	\$65
<b>FY 2006</b>	298,279	407	0.1%	\$419,961	\$86	\$1

		<b>Provider Type 82 - Psychosocial Rehabilitative Services (H2017)</b>				
		Penetration				
	All Medicaid Members	Patients	Rate	Paid amount	Paid Amount	Paid PMPM
FY 2014	258,410	487	0.2%	\$1,044,078	\$179	\$4
FY 2013	288,961	913	0.3%	\$3,290,011	\$300	\$11
FY 2012	281,705	2,062	0.7%	\$6,753,124	\$273	\$24
FY 2011	267,798	2,927	1.1%	\$15,853,920	\$451	\$59
FY 2010	243,582	2,700	1.1%	\$30,134,745	\$930	\$124
<b>FY 2006</b>	192,493	459	0.2%	\$1,531,109	\$278	\$8

		<b>Provider Type 26 - Psychosocial Rehabilitative Services (H2017)</b>				
		Penetration				
	All Medicaid Members	Patients	Rate	Paid amount	Paid Amount	Paid PMPM
FY 2014	137,845	11	0.0%	\$9,131	\$69	\$0
FY 2013	160,895	70	0.0%	\$109,259	\$130	\$1
FY 2012	154,734	75	0.0%	\$158,327	\$176	\$1
FY 2011	147,580	71	0.0%	\$189,411	\$222	\$1
FY 2010	132,119	31	0.0%	\$132,169	\$355	\$1
<b>FY 2006</b>	107,553	0	0.0%	\$0	\$0	\$0

## Utilization Snapshot

Analysis Period Ending FY 2014

5 Months in Current FY

	FY 2006 Statewide - Baseline	Change from FY 2010 to FY 2011	Change from FY 2011 to FY 2012	Change from FY 2012 to FY 2013	Change from FY 2013 to FY 2014	FY 2014
All Medicaid Members	298,279	↗ 10.5%	↗ 5.1%	→ 3.0%	↘ -11.5%	394,807
Behavioral Health Patients	8,605	↗ 11.9%	↗ 9.5%	↗ 15.5%	↘ -22.3%	16,877
Percent of BH Patients to All Medicaid Members	3%	→ 1.3%	→ 4.2%	↗ 12.2%	↘ -12.2%	4.3%
Paid for all BH Services	\$44,618,676	↘ -17.5%	↗ 18.3%	↗ 14.5%	↘ -54.2%	\$84,364,879
Paid for all BH Services (12-month forecast)	\$44,618,676	↘ -17.5%	↗ 18.3%	↗ 15.5%	↘ -51.8%	\$89,539,694
Paid / BH Patient	\$5,185	↘ -26.3%	↗ 8.1%	← -0.9%	↘ -41.1%	\$4,999
Paid PMPM	\$12	↘ -25.4%	↗ 12.6%	↗ 11.2%	↘ -48.3%	\$18

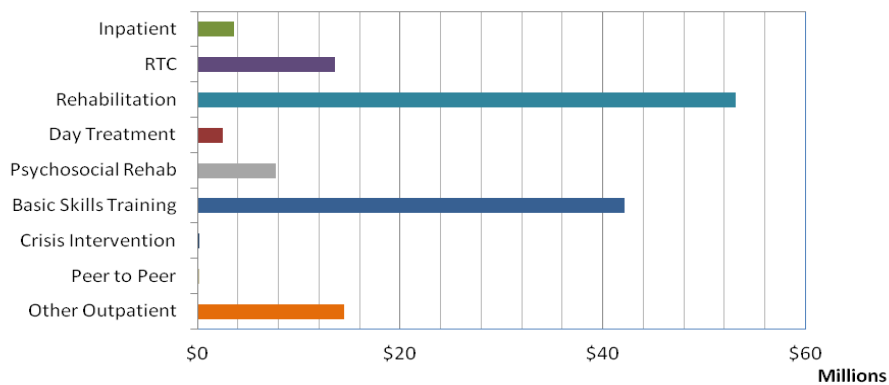
### Key

"Large" drop	> 20% decrease	↘
"Moderate" drop	5% - 20% decrease	↘
"Slight" drop	< 5% decrease	←
"Slight" increase	< 5% increase	→
"Moderate" increase	5% - 20% increase	↗
"Large" increase	> 20% increase	↗

FY 2014 Inpatient Length of Stay							
	PT 11			PT 13			RTC Therapeutic Leave
	Acute	Skilled	Substance Abuse	Acute	Skilled	Substance Abuse	
BH Patients	210	81	57	817	124	48	54
Average LOS	13	14	12	12	5	13	2
Maximum LOS	105	66	23	54	27	39	6

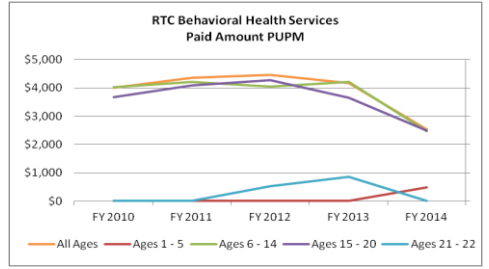
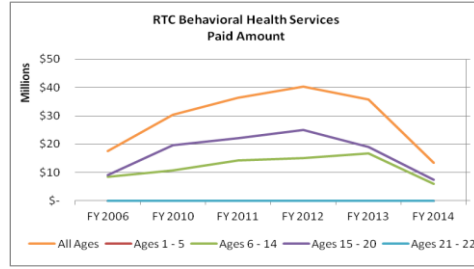
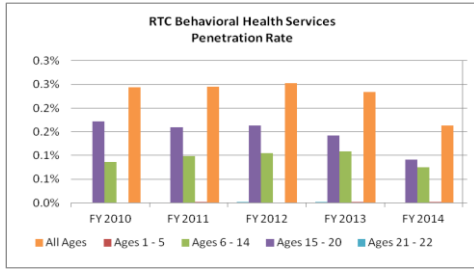
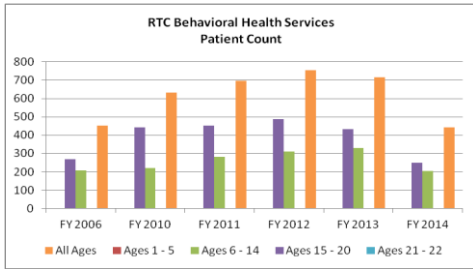
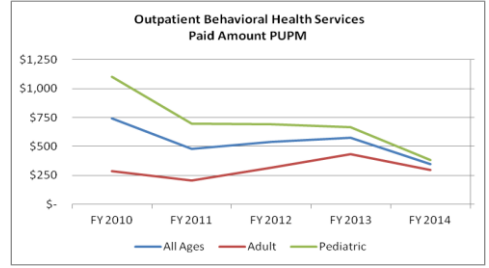
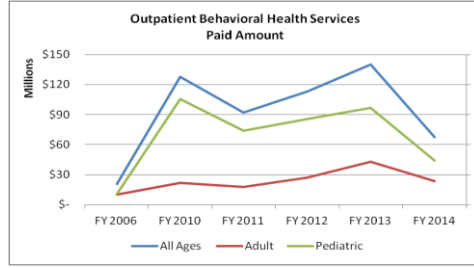
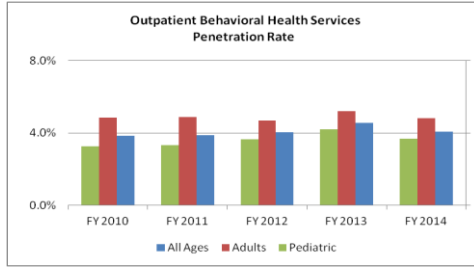
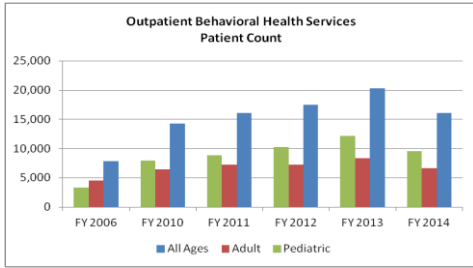
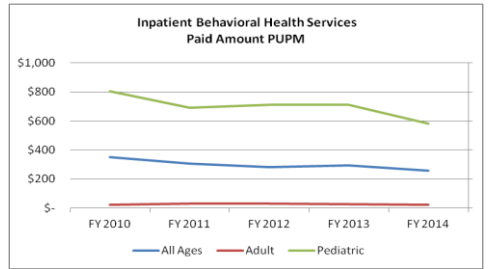
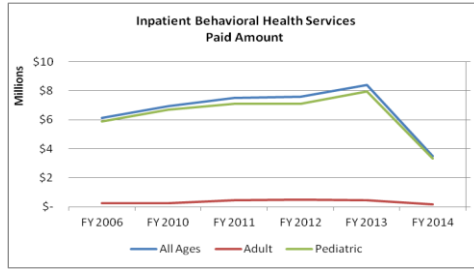
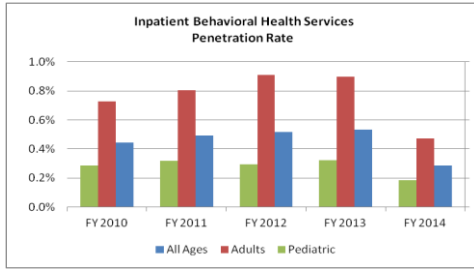
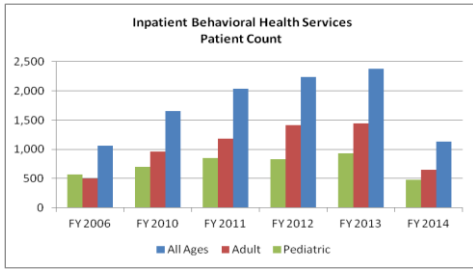
Note: Average LOS is per patient not per visit throughout report.

### FY 2014 Payments for All Behavioral Health Services



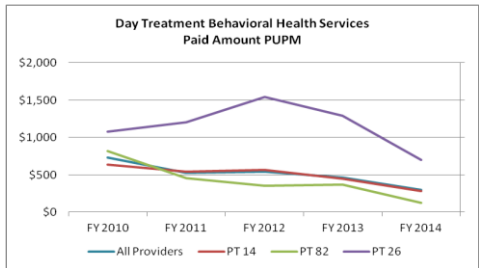
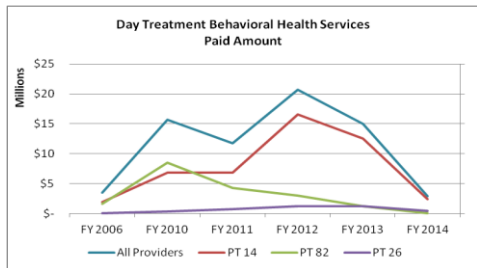
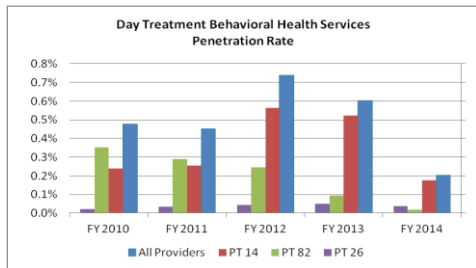
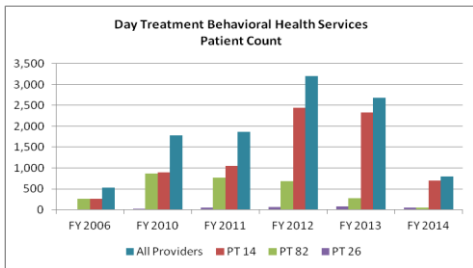
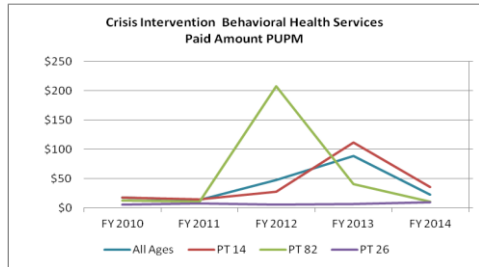
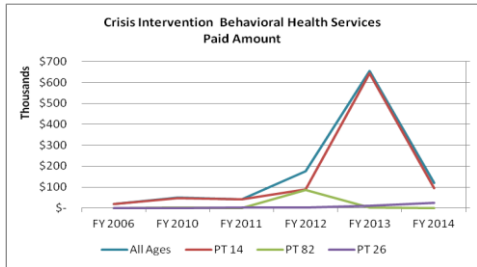
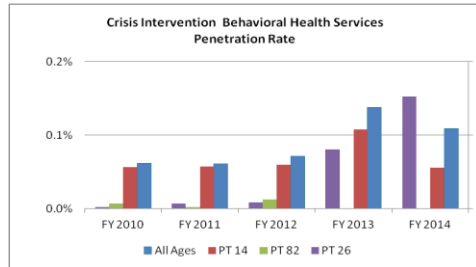
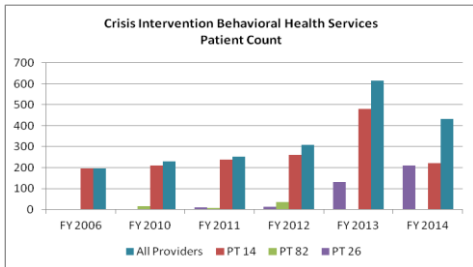
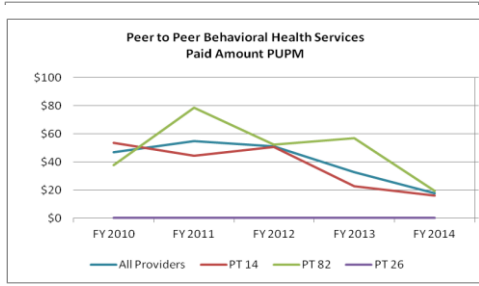
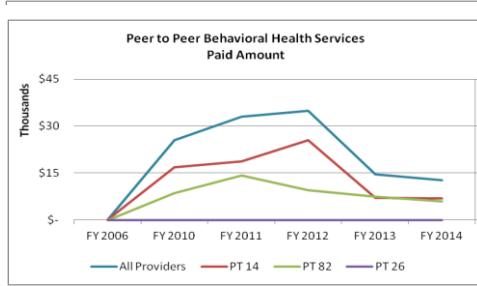
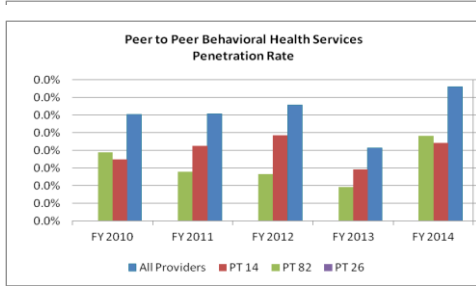
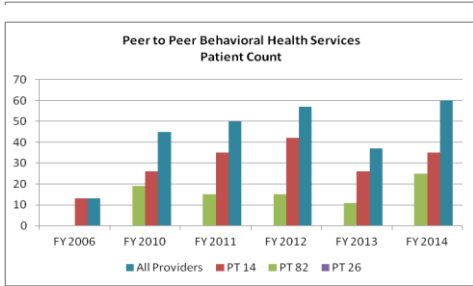
**Utilization Trends**

Analysis Period Ending FY 2014  
5 Months in Current FY



**Utilization Trends**

Analysis Period Ending FY 2014  
5 Months in Current FY



**Utilization Trends**

Analysis Period Ending FY 2014  
5 Months in Current FY

